

**six**<sup>®</sup>  
*team*

By **for**mula

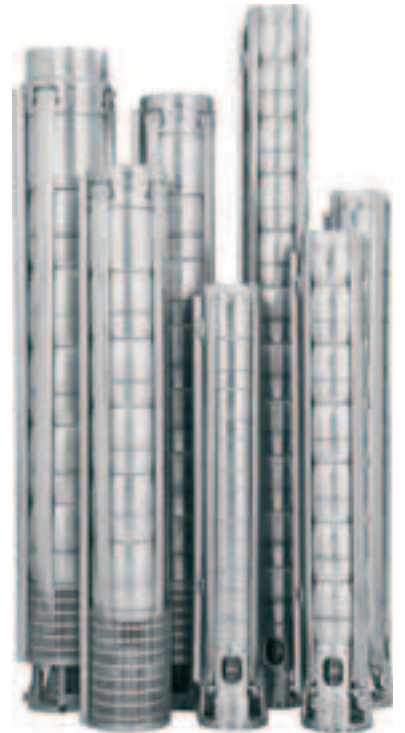
# SUBMERSIBLE PUMPS & MOTORS





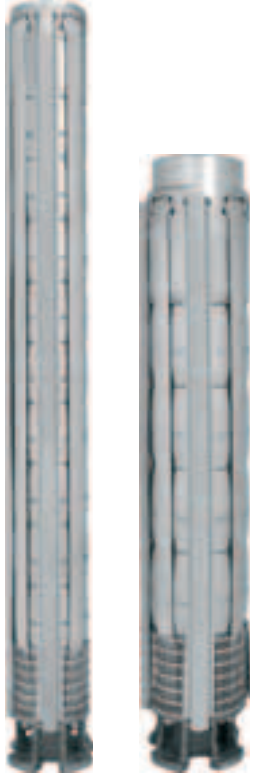


By **for**mula



## 6" / 8" SUBMERSIBLE PUMPS

Full Stainless Steel



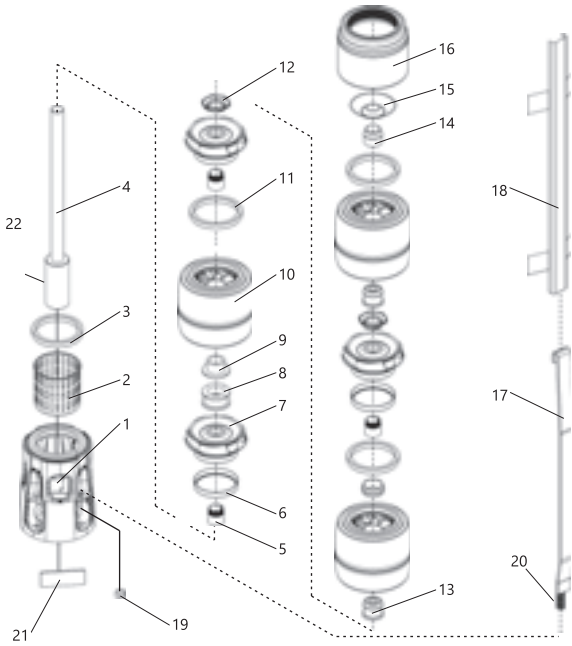
## 6" / 8" SUBMERSIBLE PUMPS

Full Stainless Steel

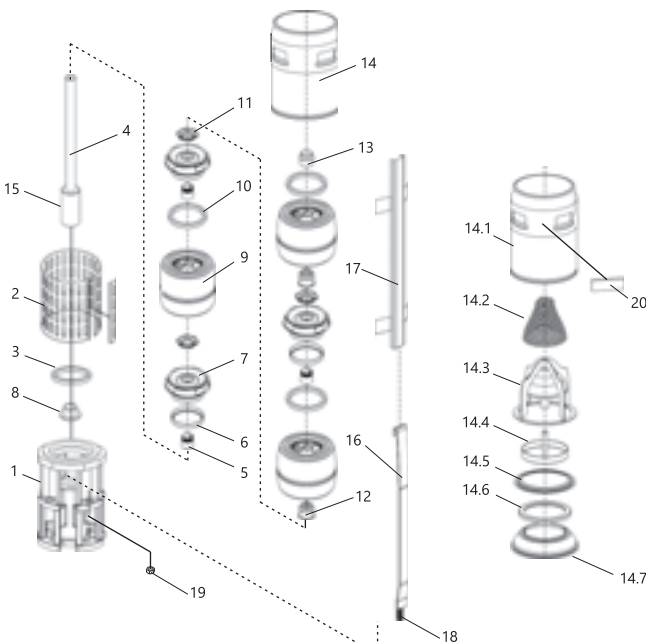
- Long life
- High efficiency
- High durability and solid construction
- Easy service operation
- Suitable connection in NEMA standards
- Water lubricated rubber bearing
- Built-in checkvalve to prevent back flow



Submersible Pumps Parts & Materials

6" Parts & Materials		No	Part Name	Material
	1	Suction Case	Stainless Steel (AISI 304L)	
	2	Strainer	Stainless Steel (AISI 304L)	
	3	Suction Case Wear Ring	Bronze / * AISI 304 + Rubber	
	4	Pump Shaft	Stainless Steel (AISI 431)	
	5	Collet	Stainless Steel (AISI 304)	
	6	Impeller Wear Ring	Stainless Steel (AISI 304L)	
	7	Impeller	Stainless Steel (AISI 304L)	
	8	Nut For Stop Ring	Stainless Steel (AISI 304)	
	9	Stop Ring	Bronze (ASTM B145-4A)	
	10	Diffuser	Stainless Steel (AISI 304L)	
	11	Diffuser Wear Ring	Rubber	
	12	Nut For Collet	Rubber	
	13	Rubber Bearing	Stainless Steel (AISI 304L)	
	14	Upper Bearing	Bronze (ASTM B145-4A)	
	15	Valve Cup	Stainless Steel (AISI 304L)	
	16	Discharge Case	Stainless Steel (AISI 304L)	
	17	Tie Rod	Stainless Steel (AISI 304L)	
	18	Cable Guard	Stainless Steel (AISI 304L)	
	19	Tie Rod Nut	Stainless Steel (AISI 304)	
	20	Tie Rod Stud	Stainless Steel (AISI 316)	
	21	Name Plate	Stainless Steel (AISI 304L)	
	22	Coupling	Stainless Steel (AISI 431)	

\* Only used for models 6017 / 6030

8" Parts & Materials		No	Part Name	Material
	1	Suction Case	Stainless Steel (AISI 304L)	
	2	Strainer	Stainless Steel (AISI 304L)	
	3	Suction Case Wear Ring	Rubber	
	4	Pump Shaft	Stainless Steel (AISI 431)	
	5	Collet	Stainless Steel (AISI 304)	
	6	Impeller Wear Ring	Stainless Steel (AISI 304L)	
	7	Impeller	Stainless Steel (AISI 304L)	
	8	Stop Ring	Bronze (ASTM B145-4A)	
	9	Diffuser	Stainless Steel (AISI 304L)	
	10	Diffuser Wear Ring	Rubber	
	11	Nut for Collet	Stainless Steel (AISI 304L)	
	12	Rubber Bearing	Rubber	
	13	Upper Bearing	Bronze (ASTM B145-4A)	
	14	Discharge Case	Stainless Steel (AISI 304L)	
	14.1	Discharge Case Body	Stainless Steel (AISI 304L)	
	14.2	Valve Cup Spring	Stainless Steel (AISI 304L)	
	14.3	Valve Cup Guide	Stainless Steel (AISI 304L)	
	14.4	Valve Cup	Stainless Steel (AISI 304L)	
	14.5	Up.Valve Cup Seat Retainer	Stainless Steel (AISI 304L)	
	14.6	Valve Cup Seat	Rubber	
14.7	Low.Valve Cup Seat Ret.	Stainless Steel (AISI 304L)		
15	Coupling	Stainless Steel (AISI 431)		
16	Tie Rod	Stainless Steel (AISI 304L)		
17	Cable Guard	Stainless Steel (AISI 304L)		
18	Tie Rod Stud	Stainless Steel (AISI 316)		
19	Tie Rod Nut	Stainless Steel (AISI 304L)		
20	Name Plate	Stainless Steel (AISI 304L)		



**Performance Table**

Pump Type	Stages	Motor		Current (A)	m <sup>3</sup> /h l/s	0	6	8	10	12	14	16	18	20
		kW	HP			0	1,7	2,2	2,8	3,3	3,9	4,4	5	5,6
FX6-17/01	1	0,55	0,75	1.6	Head (m)	10	10	10	9	9	8	7	7	5
FX6-17/02	2	1,1	1,5	2.8		21	21	20	20	19	17	16	14	12
FX6-17/03	3	2,2	3	5.3		34	33	32	31	30	28	25	22	19
FX6-17/04	4	2,2	3	5.3		46	45	44	42	40	37	34	30	25
FX6-17/05	5	3	4	7.2		57	56	55	53	50	47	43	38	32
FX6-17/06	6	4	5,5	9,5/10,2		69	67	66	64	61	56	51	45	39
FX6-17/07	7	4	5,5	9,5/10,2		81	79	78	75	72	67	61	54	46
FX6-17/08	8	5,5	7,5	12,6/13,3		93	91	89	86	82	76	70	62	53
FX6-17/09	9	5,5	7,5	12,6/13,3		104	102	100	97	92	86	78	69	59
FX6-17/10	10	5,5	7,5	12,6/13,3		116	113	111	107	102	95	87	77	66
FX6-17/11	11	7,5	10	17/17,2		127	125	122	118	112	105	96	85	72
FX6-17/12	12	7,5	10	17/17,2		139	136	133	129	123	115	104	92	79
FX6-17/13	13	7,5	10	17/17,2		151	148	144	139	133	124	113	100	85
FX6-17/14	14	7,5	10	17/17,2		162	159	155	150	143	134	122	108	92
FX6-17/15	15	9,3	12,5	20,8		174	170	166	161	153	143	131	115	98
FX6-17/16	16	9,3	12,5	20,8		185	182	178	172	164	153	139	123	105
FX6-17/17	17	9,3	12,5	20,8		197	193	189	182	174	162	148	131	112
FX6-17/18	18	11	15	23,7		209	204	200	193	184	172	157	139	118
FX6-17/19	19	11	15	23,7		220	216	211	204	194	181	165	146	125
FX6-17/20	20	11	15	23,7		232	227	222	215	204	191	174	154	131
FX6-17/21	21	13	17,5	28,7		243	238	233	225	215	200	183	162	138
FX6-17/22	22	13	17,5	28,7		255	250	244	236	225	210	191	169	144
FX6-17/23	23	13	17,5	28,7		266	261	255	247	235	220	200	177	151
FX6-17/24	24	13	17,5	28,7		278	272	266	258	245	229	209	185	158
FX6-17/25	25	15	20	33,1		290	284	277	268	255	239	218	192	164

**Dimensions and Weights Table**

Pump Type	Stages	Motor		Dimensions (mm)					Weights (kg)		
		kW	HP	L	LM	LP	ΦM	ΦP	Motor	Pump	Total
FX6-17/01	1	0,55	0,75	1342	361	330	95	132	8.6	5	13,6
FX6-17/02	2	1,1	1,5	1431	401	390	95	132	10,35	7	17,35
FX6-17/03	3	2,2	3	1492	471	451	95	132	13,9	8	21,9
FX6-17/04	4	2,2	3	1552	471	511	95	132	13,9	10	23,9
FX6-17/05	5	3	4	1693	530	572	95	132	16,2	11	27,2
FX6-17/06	6	4	5,5	1753	600/649	632	95/142	132	19,8/40	13	32,8/53
FX6-17/07	7	4	5,5	1293/1342	600/649	693	95/142	132	19,8/40	14	33,8/54
FX6-17/08	8	5,5	7,5	1408/1402	655/649	753	95/142	132	22,5/40	16	38,5/56
FX6-17/09	9	5,5	7,5	1469/1463	655/649	814	95/142	132	22,5/40	17	39,5/57
FX6-17/10	10	5,5	7,5	1529/1523	655/649	874	95/142	132	22,5/40	18	40,5/58
FX6-17/11	11	7,5	10	1730/1613	795/678	935	95/142	132	28,8/43,5	20	48,8/63,5
FX6-17/12	12	7,5	10	1790/1673	795/678	995	95/142	132	28,8/43,5	21	49,8/64,5
FX6-17/13	13	7,5	10	1851/1734	795/678	1056	95/142	132	28,8/43,5	23	51,8/66,5
FX6-17/14	14	7,5	10	1911/1794	795/678	1116	95/142	132	28,8/43,5	24	52,8/67,5
FX6-17/15	15	9,3	12,5	1935	758	1177	142	132	50	26	76
FX6-17/16	16	9,3	12,5	1995	758	1237	142	132	50	27	77
FX6-17/17	17	9,3	12,5	2056	758	1298	142	132	50	29	79
FX6-17/18	18	11	15	2158	800	1358	142	132	55	30	85
FX6-17/19	19	11	15	2219	800	1419	142	132	55	31	86
FX6-17/20	20	11	15	2279	800	1479	142	132	55	33	88
FX6-17/21	21	13	17,5	2391	851	1540	142	132	60	34	94
FX6-17/22	22	13	17,5	2451	851	1600	142	132	60	36	96
FX6-17/23	23	13	17,5	2512	851	1661	142	132	60	37	97
FX6-17/24	24	13	17,5	2572	851	1721	142	132	60	39	99
FX6-17/25	25	15	20	2693	911	1782	142	132	65	40	105



**Performance Curves**

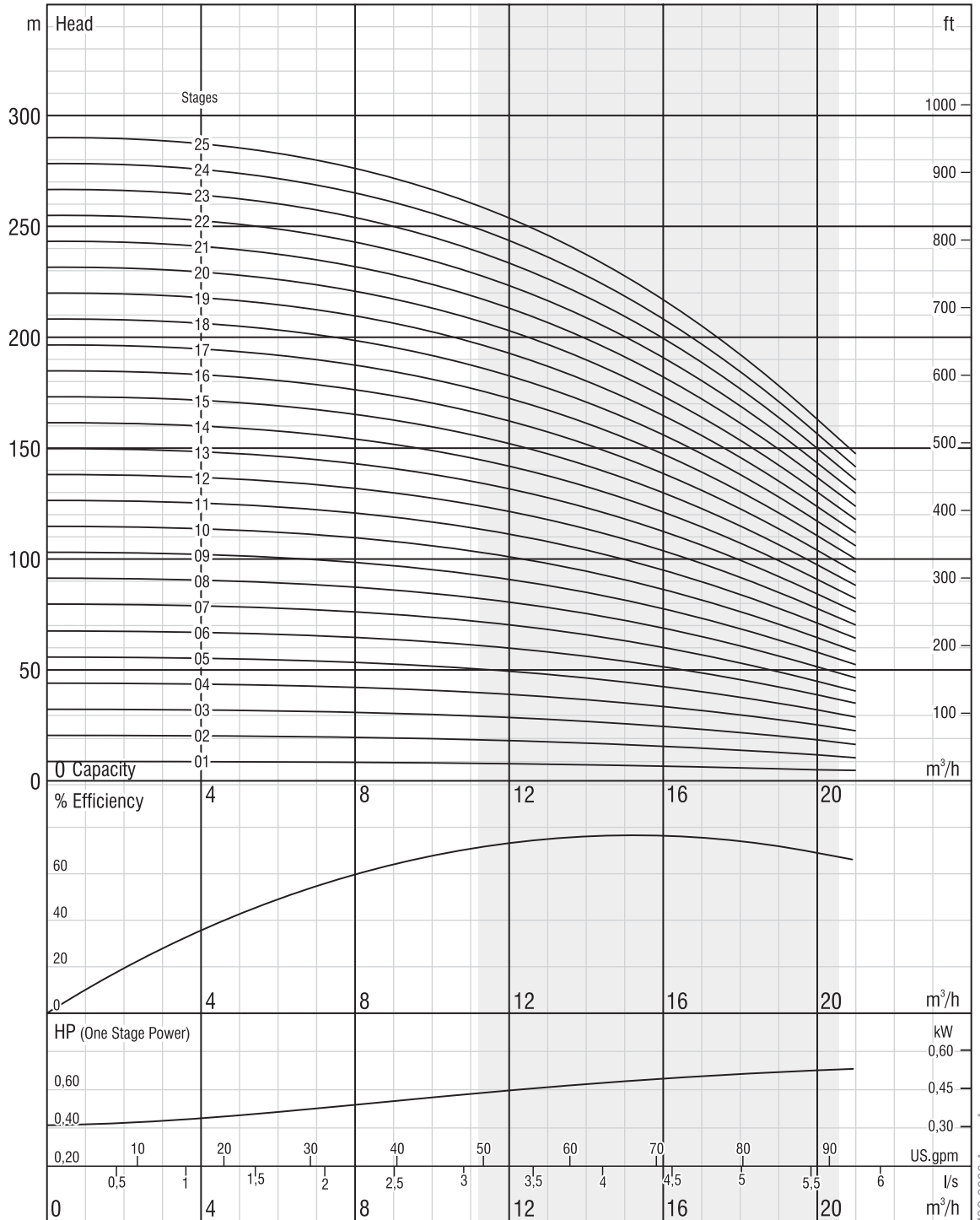
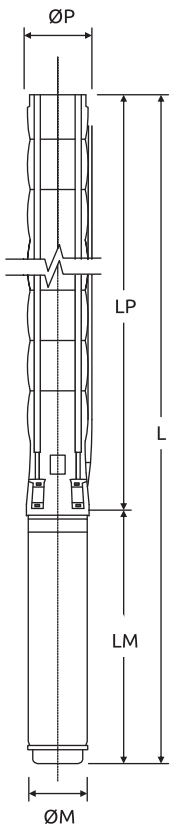
**Rotation:**  
CCW

**Revolution:**  
2900 rpm

**Outlet Diameter:**  
132 mm

**Outlet Connection Diameter:**  
2 1/2" (inside threaded)

**Shaft diameter:**  
22 mm



The hydraulic working characteristics have been taken with water at 15°C, at the atmospheric pressure of 1 bar and specific gravity is 1 gr/cm³  
Due to continuous improvement in design we reserve the right to amend specifications or data without prior notice.

ISO 9906 Annex A



**Performance Table**

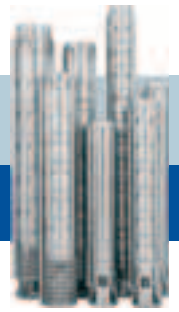
Pump Type	Stages	Motor		Current (A)	m <sup>3</sup> /h l/s	0	6	8	10	12	14	16	18	20
		kW	HP			0	1,7	2,2	2,8	3,3	3,9	4,4	5	5,6
FX6-17/26	26	15	20	33.1	Head (m)	301	295	289	279	266	248	226	200	171
FX6-17/27	27	15	20	33.1		313	306	300	290	276	258	235	208	177
FX6-17/28	28	15	20	33.1		324	318	311	300	286	267	244	216	184
FX6-17/29	29	18,5	25	41.8		336	329	322	311	296	277	252	223	190
FX6-17/30	30	18,5	25	41.8		348	340	333	322	307	286	261	231	197
FX6-17/31	31	18,5	25	41.8		359	352	344	333	317	296	270	239	203
FX6-17/32	32	18,5	25	41.8		371	363	355	343	327	305	279	246	210
FX6-17/33	33	18,5	25	41.8		382	375	366	354	337	315	287	254	217
FX6-17/34	34	18,5	25	41.8		394	386	377	365	347	325	296	262	223
FX6-17/35	35	22	30	48.5/46.3		405	397	388	376	358	334	305	269	230
FX6-17/36	36	22	30	48.5/46.3		417	409	400	386	368	344	313	277	236
FX6-17/37	37	22	30	48.5/46.3		429	420	411	397	378	353	322	285	243
FX6-17/38	38	22	30	48.5/46.3		440	431	422	408	388	363	331	293	249
* FX6-17/39	39	22	30	48.5/46.3		452	443	433	418	399	372	339	300	256
* FX6-17/40	40	22	30	48.5/46.3		463	454	444	429	409	382	348	308	263
* FX6-17/41	41	22	30	48.5/46.3		475	465	455	440	419	391	357	316	269
* FX6-17/42	42	26,5	35	56.4/55.1		487	477	466	451	429	401	366	323	276
* FX6-17/43	43	26,5	35	56.4/55.1		498	488	477	461	439	410	374	331	282

Pump with jacket \*

**Dimensions and Weights Table**

Pump Type	Stages	Motor		Dimensions (mm)					Weights (kg)		
		kW	HP	L	LM	LP	ΦM	ΦP	Motor	Pump	Total
FX6-17/26	26	15	20	2693	973	1963	142	132	65	42	107
FX6-17/27	27	15	20	2753	973	2024	142	132	65	43	108
FX6-17/28	28	15	20	2814	973	2084	142	132	65	45	110
FX6-17/29	29	18,5	25	2874	973	2145	142	132	72	46	118
FX6-17/30	30	18,5	25	2997	973	2205	142	132	72	47	119
FX6-17/31	31	18,5	25	3118	973	2145	142	132	72	49	121
FX6-17/32	32	18,5	25	3178	973	2205	142	132	72	50	122
FX6-17/33	33	18,5	25	3239	973	2266	142	132	72	52	124
FX6-17/34	34	18,5	25	3299	973	2326	142	132	72	53	125
FX6-17/35	35	22	30	3393/3227	1006/840	2387	142/172	132	76/81	55	131/136
FX6-17/36	36	22	30	3453/3287	1006/840	2447	142/172	132	76/81	56	132/137
FX6-17/37	37	22	30	3514/3348	1006/840	2508	142/172	132	76/81	58	134/139
FX6-17/38	38	22	30	3574/3408	1006/840	2568	142/172	132	76/81	59	135/140
FX6-17/39	39	22	30	3635/3469	1006/840	2629	142/172	132	76/81	60	136/141
FX6-17/40	40	22	30	3695/3529	1006/840	2689	142/172	132	76/81	62	138/143
FX6-17/41	41	22	30	3756/3590	1006/840	2750	142/172	132	76/81	63	139/144
FX6-17/42	42	26,5	35	3916/3700	1106/890	2810	142/172	132	87/86	65	152/151
FX6-17/43	43	26,5	35	4227/4011	1106/890	3121	142/172	167	87/86	98	185/184





**Performance Curves**

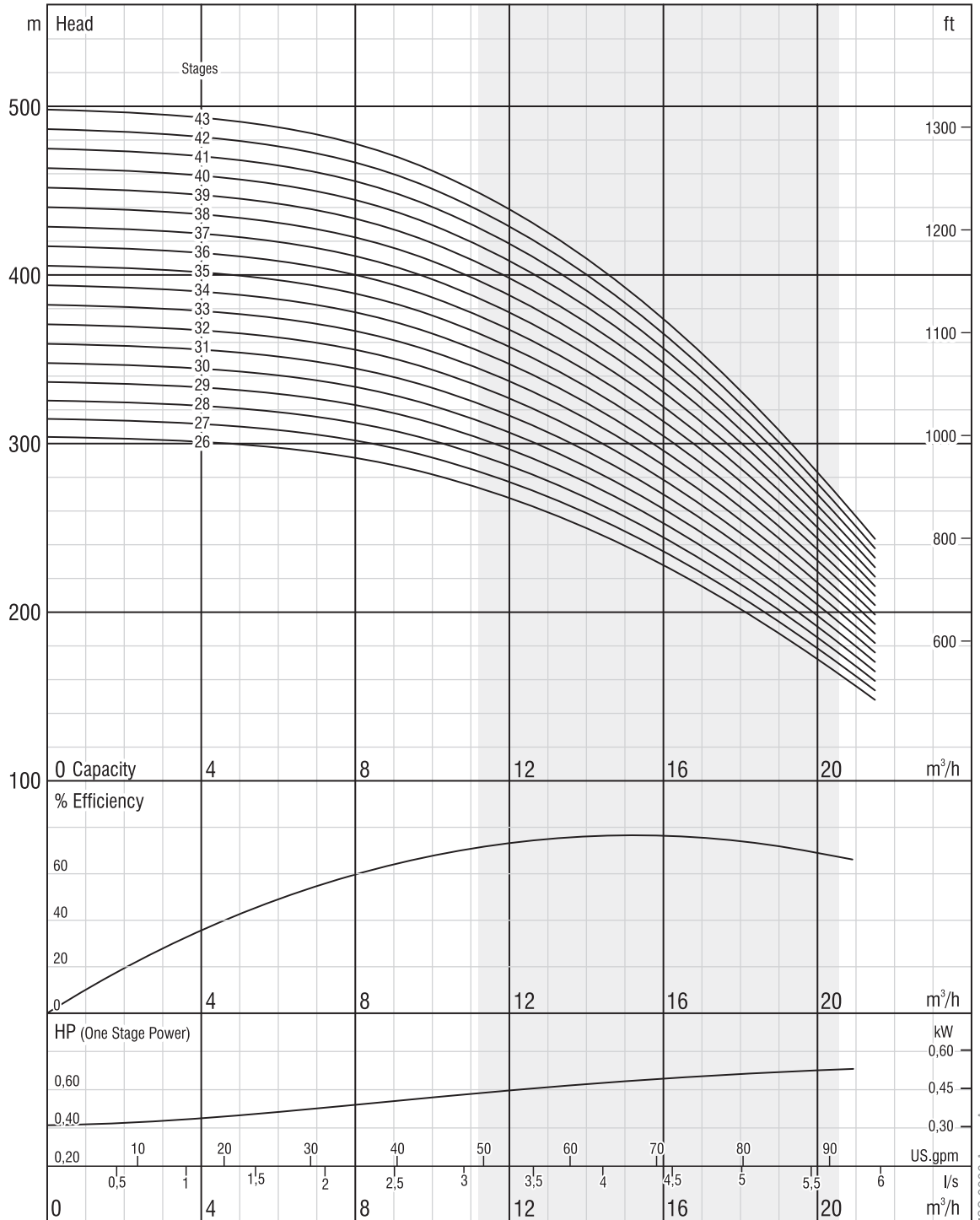
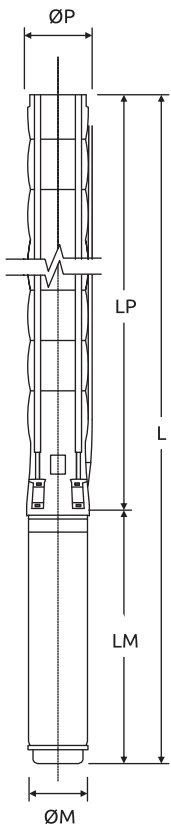
**Rotation:**  
CCW

**Revolution:**  
2900 rpm

**Outlet Diameter:**  
132 mm

**Outlet Connection Diameter:**  
2 1/2" (inside threaded)

**Shaft diameter:**  
22 mm



The hydraulic working characteristics have been taken with water at 15°C, at the atmospheric pressure of 1 bar and specific gravity is 1 gr/cm³  
Due to continuous improvement in design we reserve the right to amend specifications or data without prior notice.



**Performance Table**

Pump Type	Stages	Motor		Current (A)	m <sup>3</sup> /h l/s	0	6	8	10	12	14	16	18	20
		kW	HP			0	1,7	2,2	2,8	3,3	3,9	4,4	5	5,6
* FX6-17/44	44	26,5	35	56.4/55.1	Head (m)	510	499	488	472	450	420	383	339	289
* FX6-17/45	45	26,5	35	56.4/55.1		521	511	499	483	460	430	392	346	295
* FX6-17/46	46	26,5	35	56.4/55.1		533	522	511	494	470	439	400	354	302
* FX6-17/47	47	26,5	35	56.4/55.1		544	533	522	504	480	449	409	362	308
* FX6-17/48	48	26,5	35	56.4/55.1		556	545	533	515	491	458	418	370	315
* FX6-17/49	49	30	40	64.6/62.4/61.7		568	556	544	526	501	468	426	377	322
* FX6-17/50	50	30	40	64.6/62.4/61.7		579	567	555	536	511	477	435	385	328
* FX6-17/51	51	30	40	64.6/62.4/61.7		591	579	566	547	521	487	444	393	335
* FX6-17/52	52	30	40	64.6/62.4/61.7		602	590	577	558	531	496	453	400	341
* FX6-17/53	53	30	40	64.6/62.4/61.7		614	602	588	569	542	506	461	408	348
* FX6-17/54	54	30	40	64.6/62.4/61.7		626	613	599	579	552	516	470	416	354
* FX6-17/55	55	30	40	64.6/62.4/61.7		637	624	610	590	562	525	479	423	361
* FX6-17/56	56	30	40	64.6/62.4/61.7		649	636	622	601	572	535	487	431	368
* FX6-17/57	57	37	50	79.7/74.3/74.3		660	647	633	612	582	544	496	439	374
* FX6-17/58	58	37	50	79.7/74.3/74.3		672	658	644	622	593	554	505	447	381
* FX6-17/59	59	37	50	79.7/74.3/74.3		683	670	655	633	603	563	514	454	387
* FX6-17/60	60	37	50	79.7/74.3/74.3	695	681	666	644	613	573	522	462	394	

Pump with jacket \*

**Dimensions and Weights Table**

Pump Type	Stages	Motor		Dimensions (mm)					Weights (kg)		
		kW	HP	L	LM	LP	ΦM	ΦP	Motor	Pump	Total
FX6-17/44	44	26,5	35	4287/4071	1106/890	3181	142/172	167	87/86	100	187/186
FX6-17/45	45	26,5	35	4348/4132	1106/890	3242	142/172	167	87/86	102	189/188
FX6-17/46	46	26,5	35	4408/4192	1106/890	3302	142/172	167	87/86	103	190/189
FX6-17/47	47	26,5	35	4469/4253	1106/890	3363	142/172	167	87/86	105	192/191
FX6-17/48	48	26,5	35	4529/4313	1106/890	3423	142/172	167	87/86	107	194/193
FX6-17/49	49	30	40	4701/4424/4480	1217/940/996	3484	142/172/192	167	98/91/120	109	207/200/229
FX6-17/50	50	30	40	4761/4484/4540	1217/940/996	3544	142/172/192	167	98/91/120	111	209/202/231
FX6-17/51	51	30	40	4822/4545/4601	1217/940/996	3605	142/172/192	167	98/91/120	112	210/203/232
FX6-17/52	52	30	40	4882/4605/4661	1217/940/996	3665	142/172/192	167	98/91/120	114	212/205/234
FX6-17/53	53	30	40	4943/4666/4722	1217/940/996	3726	142/172/192	167	98/91/120	116	214/207/236
FX6-17/54	54	30	40	5003/4726/4782	1217/940/996	3786	142/172/192	167	98/91/120	118	216/209/238
FX6-17/55	55	30	40	5064/4787/4843	1217/940/996	3847	142/172/192	167	98/91/120	120	218/211/240
FX6-17/56	56	30	40	5124/4847/4903	1217/940/996	3907	142/172/192	167	98/91/120	121	219/212/241
FX6-17/57	57	37	50	5215/4948/5024	1247/980/1056	3968	142/172/192	167	103/103/129	123	226/226/252
FX6-17/58	58	37	50	5275/5008/5084	1247/980/1056	4028	142/172/192	167	103/103/129	125	228/228/254
FX6-17/59	59	37	50	5336/5069/5145	1247/980/1056	4089	142/172/192	167	103/103/129	127	230/230/256
FX6-17/60	60	37	50	5396/5129/5205	1247/980/1056	4149	142/172/192	167	103/103/129	129	232/232/258



**Performance Curves**

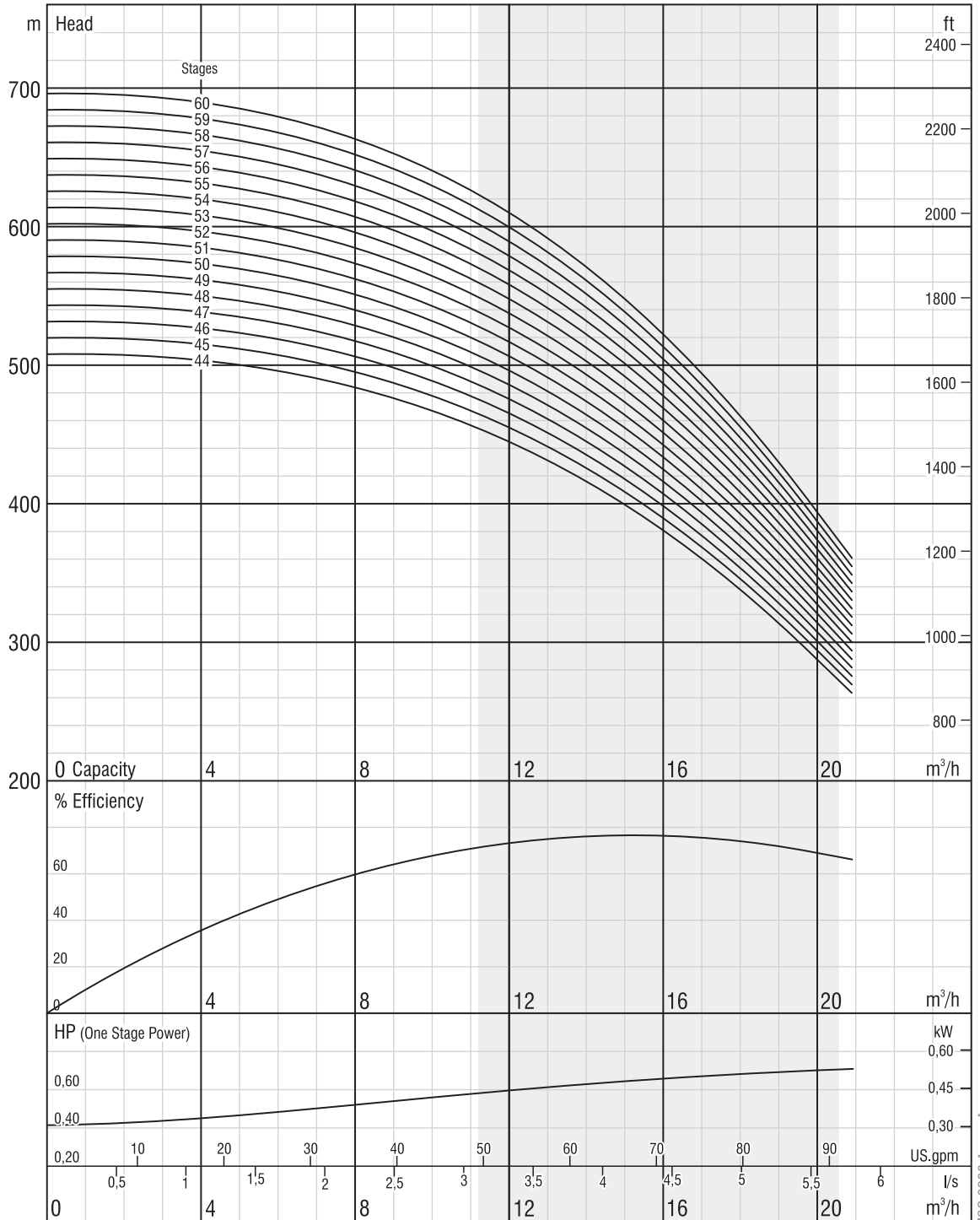
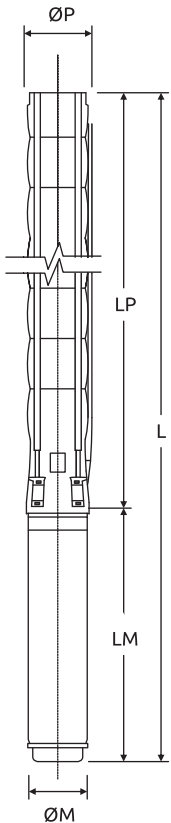
**Rotation:**  
CCW

**Revolution:**  
2900 rpm

**Outlet Diameter:**  
132 mm

**Outlet Connection Diameter:**  
2 1/2" (inside threaded)

**Shaft diameter:**  
22 mm



The hydraulic working characteristics have been taken with water at 15°C, at the atmospheric pressure of 1 bar and specific gravity is 1 gr/cm³. Due to continuous improvement in design we reserve the right to amend specifications or data without prior notice.

ISO 9906 Annex A



**Performance Table**

Pump Type	Stages	Motor		Current (A)	m <sup>3</sup> /h l/s	0	7,2	14,4	21,6	24	28,8	36	43,2
		kW	HP			0	2	4	6	6,6	8	10	12
FX6-30/01	1	1,1	1,5	2.8	Head (m)	11	10	9	8	8	7	4	2
FX6-30/02	2	2,2	3	5.3		22	22	20	18	17	14	10	4
FX6-30/03	3	3	4	7.2		33	32	29	26	24	21	15	6
FX6-30/04	4	4	5,5	9.5/10.2		48	46	43	38	36	31	22	10
FX6-30/05	5	5,5	7,5	12.6/13.3		60	58	54	47	45	39	27	12
FX6-30/06	6	5,5	7,5	12.6/13.3		72	69	64	57	54	46	33	15
FX6-30/07	7	7,5	10	17/17.2		84	81	75	66	63	54	38	17
FX6-30/08	8	7,5	10	17/17.2		96	92	86	76	71	62	44	20
FX6-30/09	9	9,3	12,5	20.8		108	104	97	85	80	70	49	22
FX6-30/10	10	9,3	12,5	20.8		119	116	107	95	89	77	54	25
FX6-30/11	11	9,3	12,5	20.8		131	127	118	104	98	85	60	27
FX6-30/12	12	11	15	23.7		143	139	129	113	107	93	65	30
FX6-30/13	13	11	15	23.7		155	150	139	123	116	100	71	32
FX6-30/14	14	13	17,5	28.7		167	162	150	132	125	108	76	35
FX6-30/15	15	13	17,5	28.7		179	173	161	142	134	116	82	37
FX6-30/16	16	15	20	33.1		191	185	172	151	143	124	124	87
FX6-30/17	17	15	20	33.1		203	196	182	161	152	131	131	93
FX6-30/18	18	18,5	25	41.8		215	208	193	170	161	139	139	98
FX6-30/19	19	18,5	25	41.8		227	220	204	180	170	147	147	103
FX6-30/20	20	18,5	25	41.8		239	231	214	189	179	155	155	109

**Dimensions and Weights Table**

Pump Type	Stages	Motor		Dimensions (mm)					Weights (kg)		
		kW	HP	L	LM	LP	ΦM	ΦP	Motor	Pump	Total
FX6-30/01	1	1,1	1,5	765	401	364	95	132	10.35	6	16.35
FX6-30/02	2	2,2	3	930	471	459	95	132	13.9	9	22.9
FX6-30/03	3	3	4	1084	530	554	95	132	16.2	11	27.2
FX6-30/04	4	4	5,5	1249/1298	600/649	649	95/142	132	19.8/40	13	32.8/53
FX6-30/05	5	5,5	7,5	1399/1393	655/649	744	95/142	132	22.5/40	15	37.5/55
FX6-30/06	6	5,5	7,5	1494/1488	655/649	839	95/142	132	22.5/40	17	39.5/57
FX6-30/07	7	7,5	10	1729/1612	795/678	934	95/142	132	28.8/43.5	19	47.8/62.5
FX6-30/08	8	7,5	10	1824/1707	795/678	1029	95/142	132	28.8/43.5	21	49.8/64.5
FX6-30/09	9	9,3	12,5	1882	758	1124	142	132	50	23	73
FX6-30/10	10	9,3	12,5	1977	758	1219	142	132	50	25	75
FX6-30/11	11	9,3	12,5	2072	758	1314	142	132	50	27	77
FX6-30/12	12	11	15	2209	800	1409	142	132	55	29	84
FX6-30/13	13	11	15	2304	800	1504	142	132	55	31	86
FX6-30/14	14	13	17,5	2450	851	1599	142	132	60	33	93
FX6-30/15	15	13	17,5	2545	851	1694	142	132	60	36	96
FX6-30/16	16	15	20	2700	911	1789	142	132	65	38	103
FX6-30/17	17	15	20	2795	911	1884	142	132	65	40	105
FX6-30/18	18	18,5	25	2952	973	1979	142	132	72	42	114
FX6-30/19	19	18,5	25	3047	973	2074	142	132	72	44	116
FX6-30/20	20	18,5	25	3142	973	2169	142	132	72	46	118



**Performance Curves**

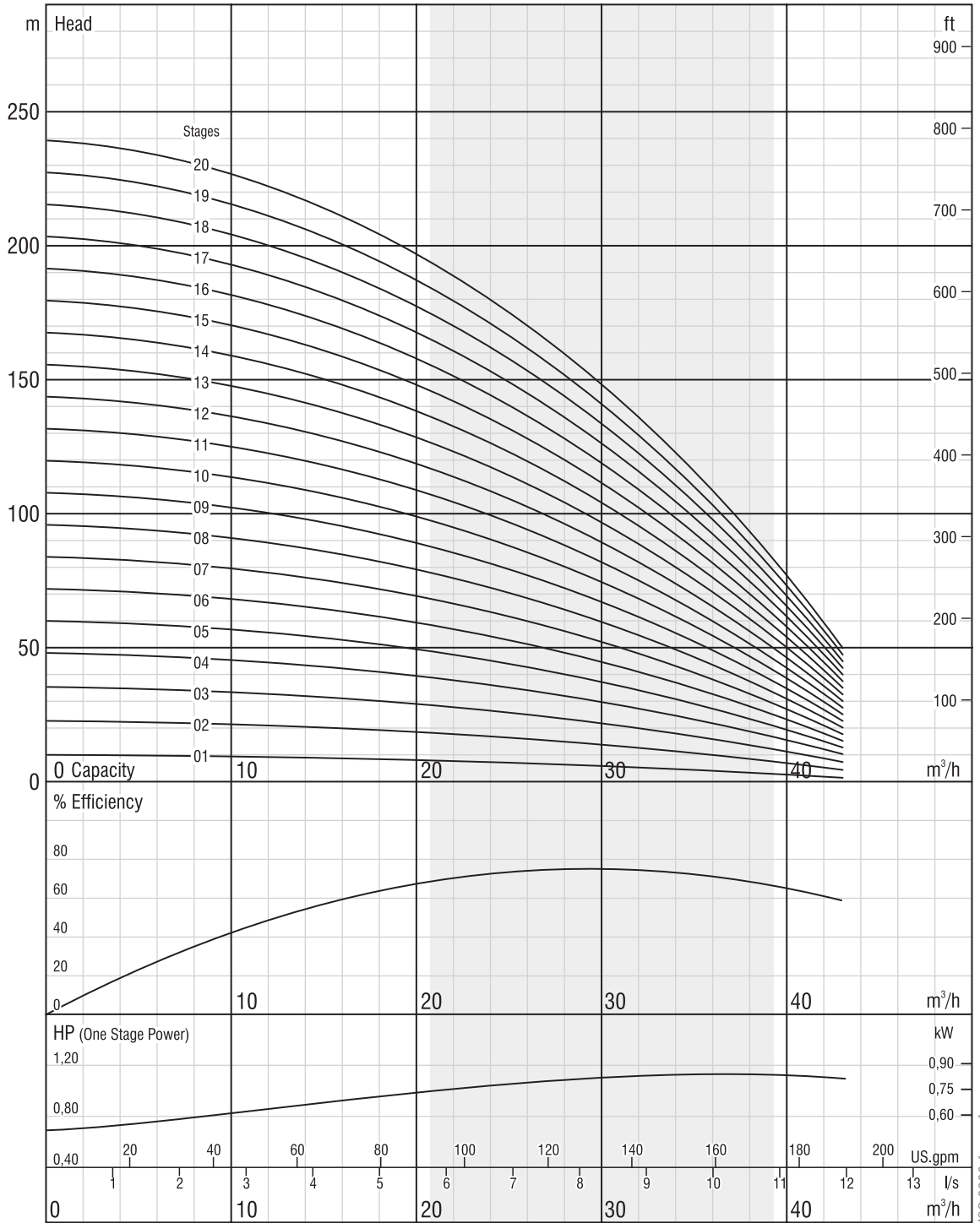
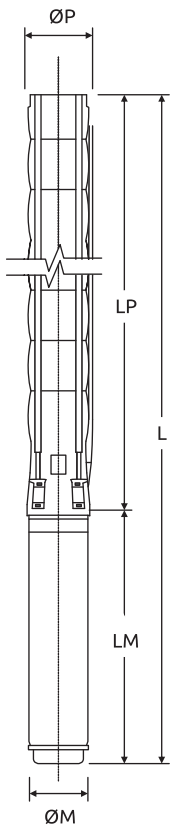
**Rotation:**  
CCW

**Revolution:**  
2900 rpm

**Outlet Diameter:**  
132 mm

**Outlet Connection Diameter:**  
3" (inside threaded)

**Shaft diameter:**  
22 mm



The hydraulic working characteristics have been taken with water at 15°C, at the atmospheric pressure of 1 bar and specific gravity is 1 gr/cm³  
Due to continuous improvement in design we reserve the right to amend specifications or data without prior notice.

ISO 9906 Annex A

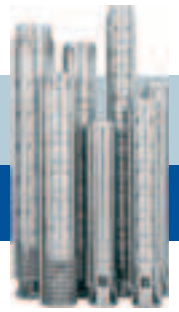


**Performance Table**

Pump Type	Stages	Motor		Current (A)	m <sup>3</sup> /h l/s	0	7,2	14,4	21,6	24	28,8	36	43,2
		kW	HP			0	2	4	6	6,6	8	10	12
FX6-30/21	21	18,5	25	41.8	Head (m)	251	243	225	199	188	162	114	52
FX6-30/22	22	22	30	48.5/46.3		263	254	236	208	197	170	120	54
FX6-30/23	23	22	30	48.5/46.3		275	266	247	218	206	178	125	57
FX6-30/24	24	22	30	48.5/46.3		287	277	257	227	214	185	131	59
FX6-30/25	25	26,5	35	56.4/55.1		299	289	268	236	223	193	136	62
FX6-30/26	26	26,5	35	56.4/55.1		311	301	279	246	232	201	142	64
FX6-30/27	27	26,5	35	56.4/55.1		323	312	290	255	241	209	147	67
FX6-30/28	28	26,5	35	56.4/55.1		334	324	300	265	250	216	152	69
FX6-30/29	29	26,5	35	56.4/55.1		346	335	311	274	259	224	158	72
FX6-30/30	30	26,5	35	56.4/55.1		358	347	322	284	268	232	163	74
FX6-30/31	31	30	40	64.6/62.4/61.7		370	358	332	293	277	240	169	77
FX6-30/32	32	30	40	64.6/62.4/61.7		382	370	343	303	286	247	174	79
FX6-30/33	33	30	40	64.6/62.4/61.7		394	381	354	312	295	255	180	82
FX6-30/34	34	30	40	64.6/62.4/61.7		406	393	365	322	304	263	185	84
FX6-30/35	35	30	40	64.6/62.4/61.7		418	405	375	331	313	270	191	87
FX6-30/36	36	30	40	64.6/62.4/61.7		430	416	386	340	322	278	196	89
FX6-30/37	37	37	50	79.7/77.4/74.3		442	428	397	350	331	286	201	92

**Dimensions and Weights Table**

Pump Type	Stages	Motor		Dimensions (mm)					Weights (kg)		
		kW	HP	L	LM	LP	ΦM	ΦP	Motor	Pump	Total
FX6-30/21	21	18,5	25	3237	973	2264	142	132	72	48	120
FX6-30/22	22	22	30	3365/3199	1006/840	2359	142/172	132	76/81	50	126/131
FX6-30/23	23	22	30	3460/3294	1006/840	2454	142/172	132	76/81	52	128/133
FX6-30/24	24	22	30	3555/3389	1006/840	2549	142/172	132	76/81	54	130/135
FX6-30/25	25	26,5	35	3750/3534	1106/890	2644	142/172	132	87/86	56	143/142
FX6-30/26	26	26,5	35	3845/3629	1106/890	2739	142/172	132	87/86	58	145/144
FX6-30/27	27	26,5	35	3940/3724	1106/890	2834	142/172	132	87/86	60	147/146
FX6-30/28	28	26,5	35	4035/3819	1106/890	2929	142/172	132	87/86	63	150/149
FX6-30/29	29	26,5	35	4130/3914	1106/890	3024	142/172	132	87/86	65	152/151
FX6-30/30	30	26,5	35	4225/4009	1106/890	3119	142/172	132	87/86	67	154/153
FX6-30/31	31	30	40	4431/4154/4210	1217/940/996	3214	142/172/192	132	98/91/120	69	167/160/189
FX6-30/32	32	30	40	4526/4249/4305	1217/940/996	3309	142/172/192	132	98/91/120	71	169/162/191
FX6-30/33	33	30	40	4621/4344/4400	1217/940/996	3404	142/172/192	132	98/91/120	73	171/164/193
FX6-30/34	34	30	40	4716/4439/4495	1217/940/996	3499	142/172/192	132	98/91/120	75	173/166/195
FX6-30/35	35	30	40	4811/4534/4590	1217/940/996	3594	142/172/192	132	98/91/120	77	175/168/197
FX6-30/36	36	30	40	4906/4629/4685	1217/940/996	3689	142/172/192	132	98/91/120	79	177/170/199
FX6-30/37	37	37	50	5031/4764/4840	1247/980/1056	3784	142/172/192	132	103/103/129	81	184/184/210



**Performance Curves**

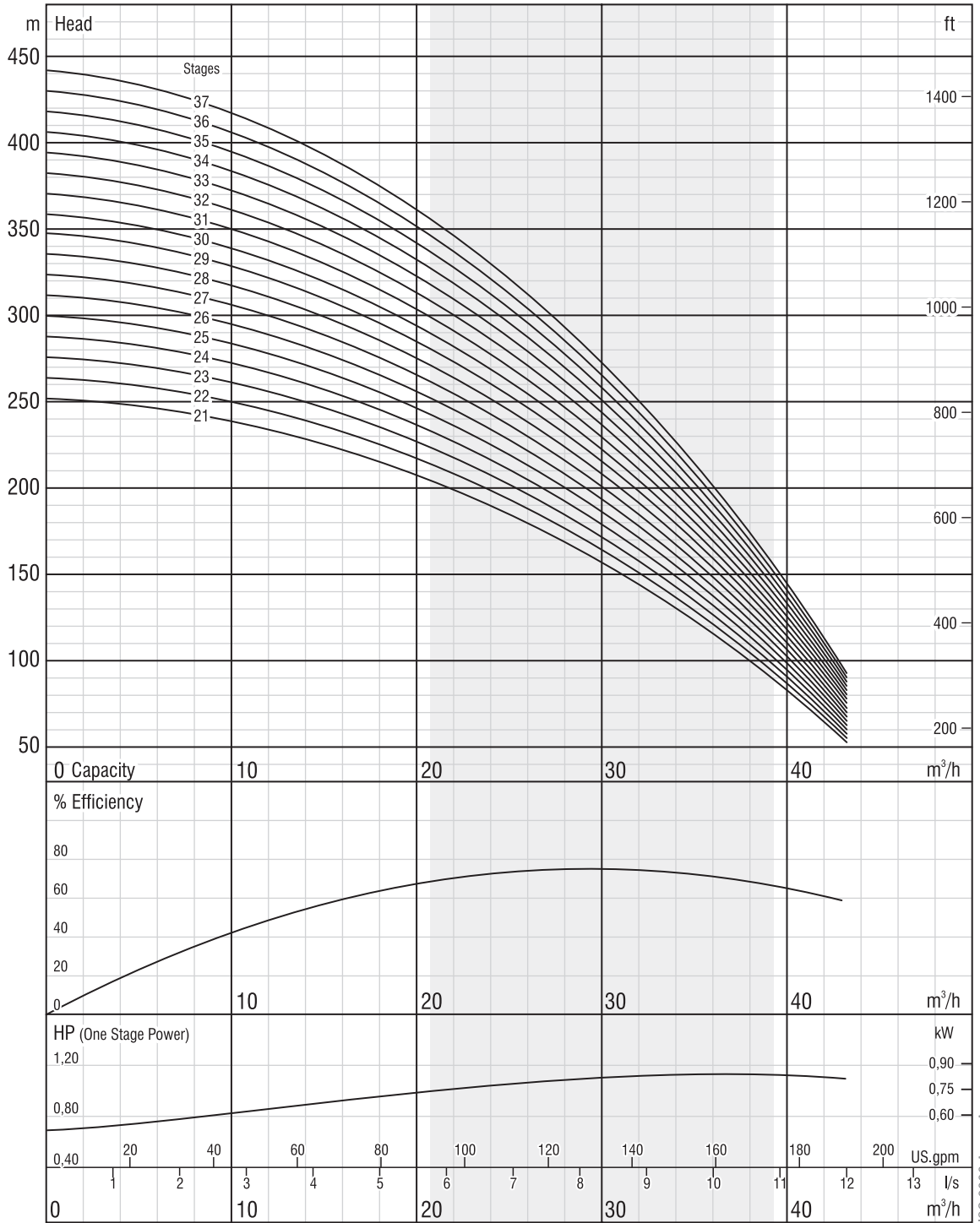
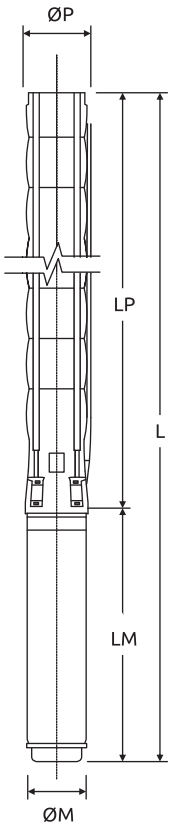
**Rotation:**  
CCW

**Revolution:**  
2900 rpm

**Outlet Diameter:**  
132 mm

**Outlet Connection Diameter:**  
3" (inside threaded)

**Shaft diameter:**  
22 mm



The hydraulic working characteristics have been taken with water at 15°C, at the atmospheric pressure of 1 bar and specific gravity is 1 gr/cm³. Due to continuous improvement in design we reserve the right to amend specifications or data without prior notice.

ISO 9906 Annex A



**Performance Table**

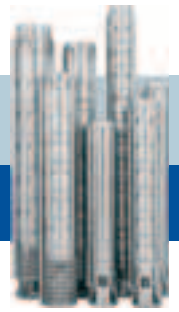
Pump Type	Stages	Motor		Current (A)	m <sup>3</sup> /h l/s	0	7,2	14,4	21,6	24	28,8	36	43,2
		kW	HP			0	2	4	6	6,6	8	10	12
FX6-30/38	38	37	50	79.7/74.3/74.3	Head (m)	454	439	407	359	340	294	207	94
* FX6-30/39	39	37	50	79.7/74.3/74.3		466	451	418	369	348	301	212	97
* FX6-30/40	40	37	50	79.7/74.3/74.3		478	462	429	378	357	309	218	99
* FX6-30/41	41	37	50	79.7/74.3/74.3		490	474	440	388	366	317	223	102
* FX6-30/42	42	37	50	79.7/74.3/74.3		502	485	450	397	375	324	229	104
* FX6-30/43	43	45	60	0/90.3/90.4		514	497	461	407	384	332	234	107
* FX6-30/44	44	45	60	0/90.3/90.4		526	509	472	416	393	340	240	109
* FX6-30/45	45	45	60	0/90.3/90.4		538	520	483	426	402	348	245	111
* FX6-30/46	46	45	60	0/90.3/90.4		550	532	493	435	411	355	250	114
* FX6-30/47	47	45	60	0/90.3/90.4		561	543	504	444	420	363	256	116
* FX6-30/48	48	45	60	0/90.3/90.4		573	555	515	454	429	371	261	119
* FX6-30/49	49	45	60	0/90.3/90.4		585	566	525	463	438	379	267	121
* FX6-30/50	50	45	60	0/90.3/90.4		597	578	536	473	447	386	272	124
* FX6-30/51	51	45	60	0/90.3/90.4		609	589	547	482	456	394	278	126
* FX6-30/52	52	52	70	105.6/103.3		621	601	558	492	465	402	283	129
* FX6-30/53	53	52	70	105.6/103.3		633	613	568	501	474	409	289	131
* FX6-30/54	54	52	70	105.6/103.3		645	624	579	511	482	417	294	134

Pump with jacket \*

**Dimensions and Weights Table**

Pump Type	Stages	Motor		Dimensions (mm)					Weights (kg)		
		kW	HP	L	LM	LP	ΦM	ΦP	Motor	Pump	Total
FX6-30/38	38	37	50	5126/4859/4935	1247/980/1056	3879	142/172/192	132	103/103/129	83	186/186/212
FX6-30/39	39	37	50	5471/5204/5280	1247/980/1056	4224	142/172/192	132	103/103/129	124	227/227/253
FX6-30/40	40	37	50	5566/5299/5375	1247/980/1056	4319	142/172/192	167	103/103/129	126	229/229/255
FX6-30/41	41	37	50	5661/5394/5470	1247/980/1056	4414	142/172/192	167	103/103/129	129	232/232/258
FX6-30/42	42	37	50	5756/5489/5565	1247/980/1056	4509	142/172/192	167	103/103/129	132	235/235/261
FX6-30/43	43	45	60	5951/5664/5720	1347/1060/1116	4604	142/172/192	167	110/113/138	134	244/247/272
FX6-30/44	44	45	60	6046/5759/5815	1347/1060/1116	4699	142/172/192	167	110/113/138	137	247/250/275
FX6-30/45	45	45	60	6141/5854/5910	1347/1060/1116	4794	142/172/192	167	110/113/138	139	249/252/277
FX6-30/46	46	45	60	6236/5949/6005	1347/1060/1116	4889	142/172/192	167	110/113/138	142	252/255/280
FX6-30/47	47	45	60	6331/6044/6100	1347/1060/1116	4984	142/172/192	167	110/113/138	145	255/258/283
FX6-30/48	48	45	60	6426/6139/6195	1347/1060/1116	5079	142/172/192	167	110/113/138	147	257/260/285
FX6-30/49	49	45	60	6521/6234/6290	1347/1060/1116	5174	142/172/192	167	110/113/138	150	260/263/288
FX6-30/50	50	45	60	6616/6329/6385	1347/1060/1116	5269	142/172/192	167	110/113/138	152	262/265/290
FX6-30/51	51	45	60	6711/6424/6480	1347/1060/1116	5364	142/172/192	167	110/113/138	155	265/268/293
FX6-30/52	52	52	70	6598/6660	1139/1201	5459	172/192	167	127/152	158	285/310
FX6-30/53	53	52	70	6693/6755	1139/1201	5554	172/192	167	127/152	160	287/312
FX6-30/54	54	52	70	6788/6850	1139/1201	5649	172/192	167	127/152	163	290/315





**Performance Curves**

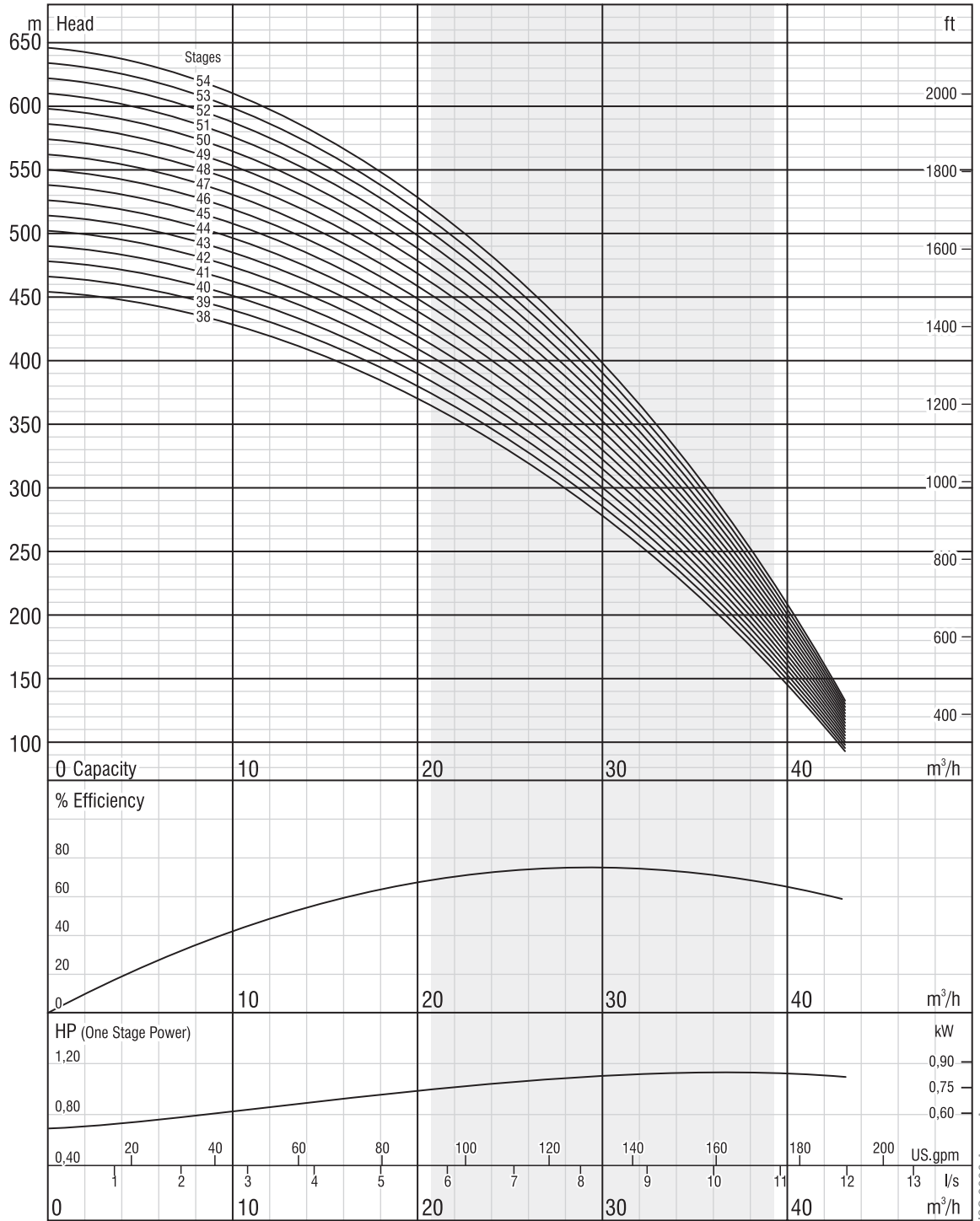
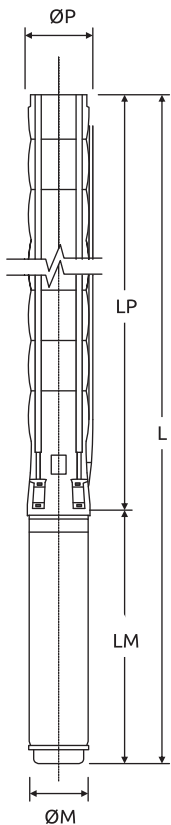
**Rotation:**  
CCW

**Revolution:**  
2900 rpm

**Outlet Diameter:**  
132 mm

**Outlet Connection Diameter:**  
3" (inside threaded)

**Shaft diameter:**  
22 mm



The hydraulic working characteristics have been taken with water at 15°C, at the atmospheric pressure of 1 bar and specific gravity is 1 gr/cm³. Due to continuous improvement in design we reserve the right to amend specifications or data without prior notice.



**Performance Table**

Pump Type	Stages	Motor		Current (A)	m <sup>3</sup> /h l/s	0	8	20	30	35	38	41	50
		kW	HP			0	2,2	5,6	8,3	9,7	10,6	11,4	13,9
FX6-36/01	1	1,5	2	3.8	Head (m)	13	13	11	10	9	8	8	6
FX6-36/02	2	3	4	7.2		27	27	24	21	19	18	18	14
FX6-36/03	3	5,5	7,5	12.6/13.3		42	42	37	32	30	29	27	22
FX6-36/04	4	7,5	10	17/17.2		56	56	50	43	40	38	37	29
FX6-36/05	5	7,5	10	17/17.2		70	70	62	54	50	48	46	36
FX6-36/06	6	9,3	12,5	20.8		84	84	74	65	60	58	55	44
FX6-36/07	7	11	15	23.7		98	98	87	76	70	67	64	51
FX6-36/08	8	13	17,5	28.7		112	112	99	86	80	77	73	58
FX6-36/09	9	13	17,5	28.7		126	126	112	97	91	87	82	65
FX6-36/10	10	15	20	33.1		140	140	124	108	101	96	91	73
FX6-36/11	11	18,5	25	41.8		154	154	137	119	111	106	101	80
FX6-36/12	12	18,5	25	41.8		167	168	149	130	121	115	110	87
FX6-36/13	13	18,5	25	41.8		181	182	161	140	131	125	119	94
FX6-36/14	14	22	30	48.5/46.3		195	196	174	151	141	135	128	102
FX6-36/15	15	22	30	48.5/46.3		209	210	186	162	151	144	137	109
FX6-36/16	16	26,5	35	56.4/55.1		223	224	199	173	161	154	146	116
FX6-36/17	17	26,5	35	56.4/55.1		237	238	211	184	171	163	155	123

**Dimensions and Weights Table**

Pump Type	Stages	Motor		Dimensions (mm)					Weights (kg)		
		kW	HP	L	LM	LP	ΦM	ΦP	Motor	Pump	Total
FX6-36/01	1	1,5	2	823	441	382	95	144	10.4	7	17.4
FX6-36/02	2	3	4	1024	530	494	95	144	16.2	10	26.2
FX6-36/03	3	5,5	7,5	1261/1255	655/649	606	95/142	144	22.5/40	12	34.5/52
FX6-36/04	4	7,5	10	1513/1396	795/678	718	95/142	144	28.8/43.5	15	43.8/58.5
FX6-36/05	5	7,5	10	1625/1508	795/678	830	95/142	144	28.8/43.5	18	46.8/61.5
FX6-36/06	6	9,3	12,5	1700	758	942	142	144	50	20	70
FX6-36/07	7	11	15	1854	800	1054	142	144	55	23	78
FX6-36/08	8	13	17,5	2017	851	1166	142	144	60	26	86
FX6-36/09	9	13	17,5	2129	851	1278	142	144	60	28	88
FX6-36/10	10	15	20	2301	911	1390	142	144	65	31	96
FX6-36/11	11	18,5	25	2475	973	1502	142	144	72	34	106
FX6-36/12	12	18,5	25	2587	973	1614	142	144	72	36	108
FX6-36/13	13	18,5	25	2699	973	1726	142	144	72	39	111
FX6-36/14	14	22	30	2844/2678	1006/840	1838	142/172	144	76/81	42	118/123
FX6-36/15	15	22	30	2956/2790	1006/840	1950	142/172	144	76/81	44	120/125
FX6-36/16	16	26,5	35	3168/2952	1106/890	2062	142/172	144	87/86	47	134/133
FX6-36/17	17	26,5	35	3280/3064	1106/890	2174	142/172	144	87/86	49	136/135



**Performance Curves**

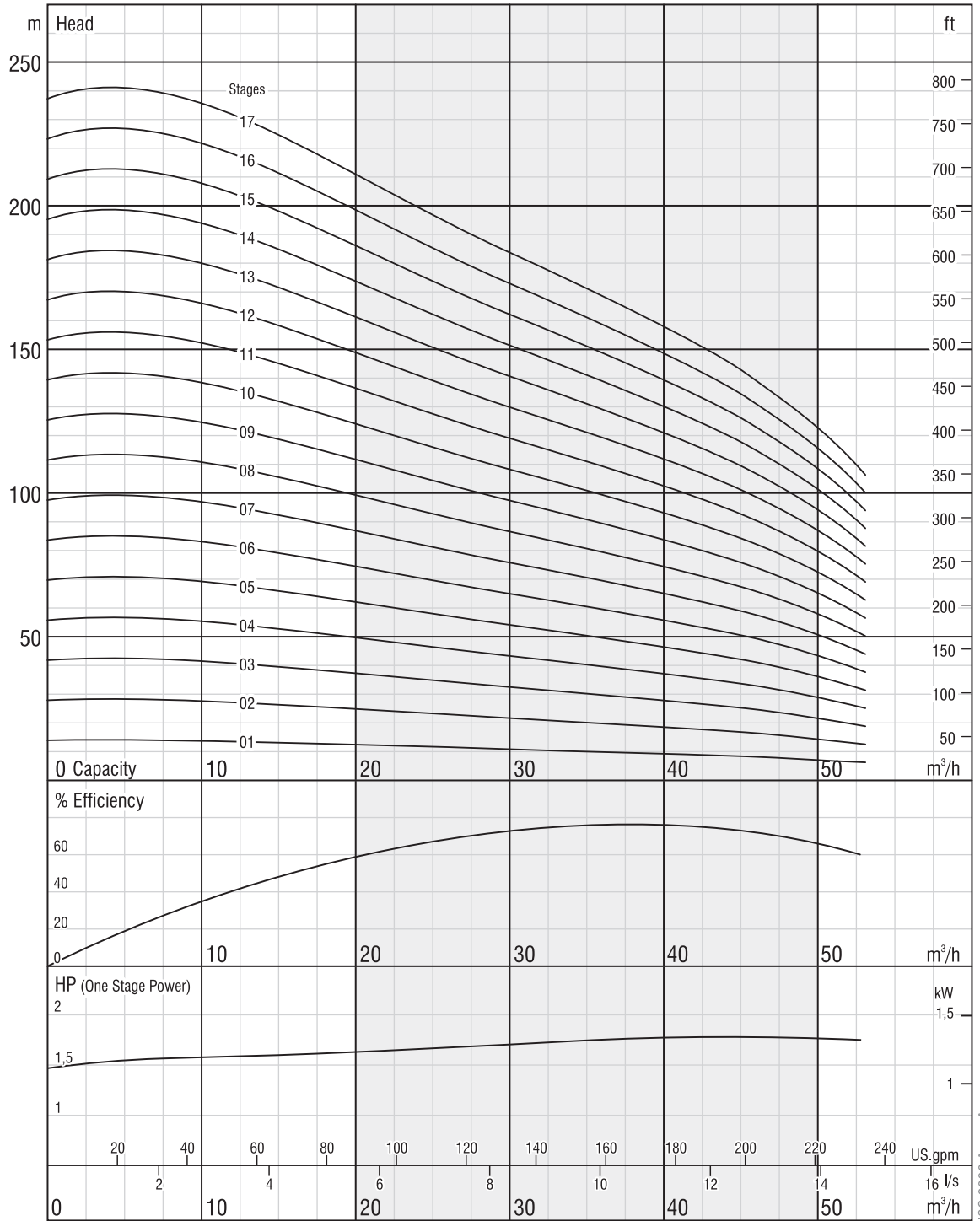
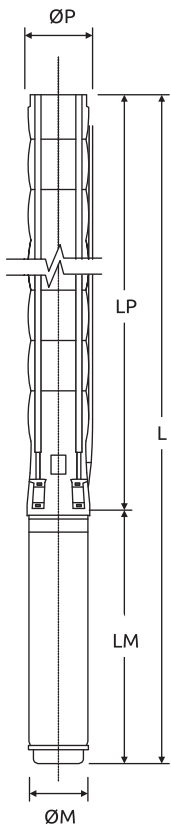
**Rotation:**  
CCW

**Revolution:**  
2900 rpm

**Outlet Diameter:**  
144 mm

**Outlet Connection Diameter:**  
4" (inside threaded)

**Shaft diameter:**  
22 mm



The hydraulic working characteristics have been taken with water at 15°C, at the atmospheric pressure of 1 bar and specific gravity is 1 gr/cm³  
Due to continuous improvement in design we reserve the right to amend specifications or data without prior notice.



**Performance Table**

Pump Type	Stages	Motor		Current (A)	m <sup>3</sup> /h l/s	0	8	20	30	35	38	41	50
		kW	HP			0	2,2	5,6	8,3	9,7	10,6	11,4	13,9
FX6-36/18	18	26,5	35	56.4/55.1	Head (m)	251	252	223	194	181	173	165	131
FX6-36/19	19	30	40	64.6/62.4/61.7		265	266	236	205	191	183	174	138
FX6-36/20	20	30	40	64.6/62.4/61.7		279	280	248	216	201	192	183	145
FX6-36/21	21	30	40	64.6/62.4/61.7		293	294	261	227	211	202	192	152
FX6-36/22	22	37	50	79.7/74.3/74.3		307	308	273	238	221	211	201	160
FX6-36/23	23	37	50	79.7/74.3/74.3		321	322	285	248	231	221	210	167
FX6-36/24	24	37	50	79.7/74.3/74.3		335	337	298	259	241	231	219	174
FX6-36/25	25	37	50	79.7/74.3/74.3		349	351	310	270	251	240	229	181
FX6-36/26	26	45	60	0/90.3/90.4		363	365	323	281	262	250	238	189
FX6-36/27	27	45	60	0/90.3/90.4		377	379	335	292	272	260	247	196
FX6-36/28	28	45	60	0/90.3/90.4		391	393	347	303	282	269	256	203
FX6-36/29	29	45	60	0/90.3/90.4		405	407	360	313	292	279	265	210
FX6-36/30	30	45	60	0/90.3/90.4		419	421	372	324	302	288	274	218
FX6-36/31	31	45	60	0/90.3/90.4		433	435	385	335	312	298	283	225
FX6-36/32	32	52	70	105.6/103.3		447	449	397	346	322	308	293	232
FX6-36/33	33	52	70	105.6/103.3		461	463	410	357	332	317	302	239

**Dimensions and Weights Table**

Pump Type	Stages	Motor		Dimensions (mm)					Weights (kg)		
		kW	HP	L	LM	LP	ΦM	ΦP	Motor	Pump	Total
FX6-36/18	18	26,5	35	3392/3176	1106/890	2286	142/172	144	87/86	52	139/138
FX6-36/19	19	30	40	3615/3338/3394	1217/940/996	2398	142/172/192	144	98/91/120	55	153/146/175
FX6-36/20	20	30	40	3727/3450/3506	1217/940/996	2510	142/172/192	144	98/91/120	57	155/148/177
FX6-36/21	21	30	40	3839/3562/3618	1217/940/996	2622	142/172/192	144	98/91/120	60	158/151/180
FX6-36/22	22	37	50	3981/3714/3790	1247/980/1056	2734	142/172/192	144	103/103/129	63	166/166/192
FX6-36/23	23	37	50	4093/3826/3902	1247/980/1056	2846	142/172/192	144	103/103/129	65	168/168/194
FX6-36/24	24	37	50	4205/3938/4014	1247/980/1056	2958	142/172/192	144	103/103/129	68	171/171/197
FX6-36/25	25	37	50	4317/4050/4126	1247/980/1056	3070	142/172/192	144	103/103/129	71	174/174/200
FX6-36/26	26	45	60	4529/4242/4298	1347/1060/1116	3182	142/172/192	144	110/113/138	73	183/186/211
FX6-36/27	27	45	60	4641/4354/4410	1347/1060/1116	3294	142/172/192	144	110/113/138	76	186/189/214
FX6-36/28	28	45	60	4753/4466/4522	1347/1060/1116	3406	142/172/192	144	110/113/138	79	189/192/217
FX6-36/29	29	45	60	4865/4578/4634	1347/1060/1116	3518	142/172/192	144	110/113/138	81	191/194/219
FX6-36/30	30	45	60	4977/4690/4746	1347/1060/1116	3630	142/172/192	144	110/113/138	84	194/197/222
FX6-36/31	31	45	60	5089/4802/4858	1347/1060/1116	3742	142/172/192	144	110/113/138	86	196/199/224
FX6-36/32	32	52	70	4993/5055	1139/1201	3854	172/192	144	127/152	89	216/241
FX6-36/33	33	52	70	5105/5167	1139/1201	3966	172/192	144	127/152	92	219/244



**Performance Curves**

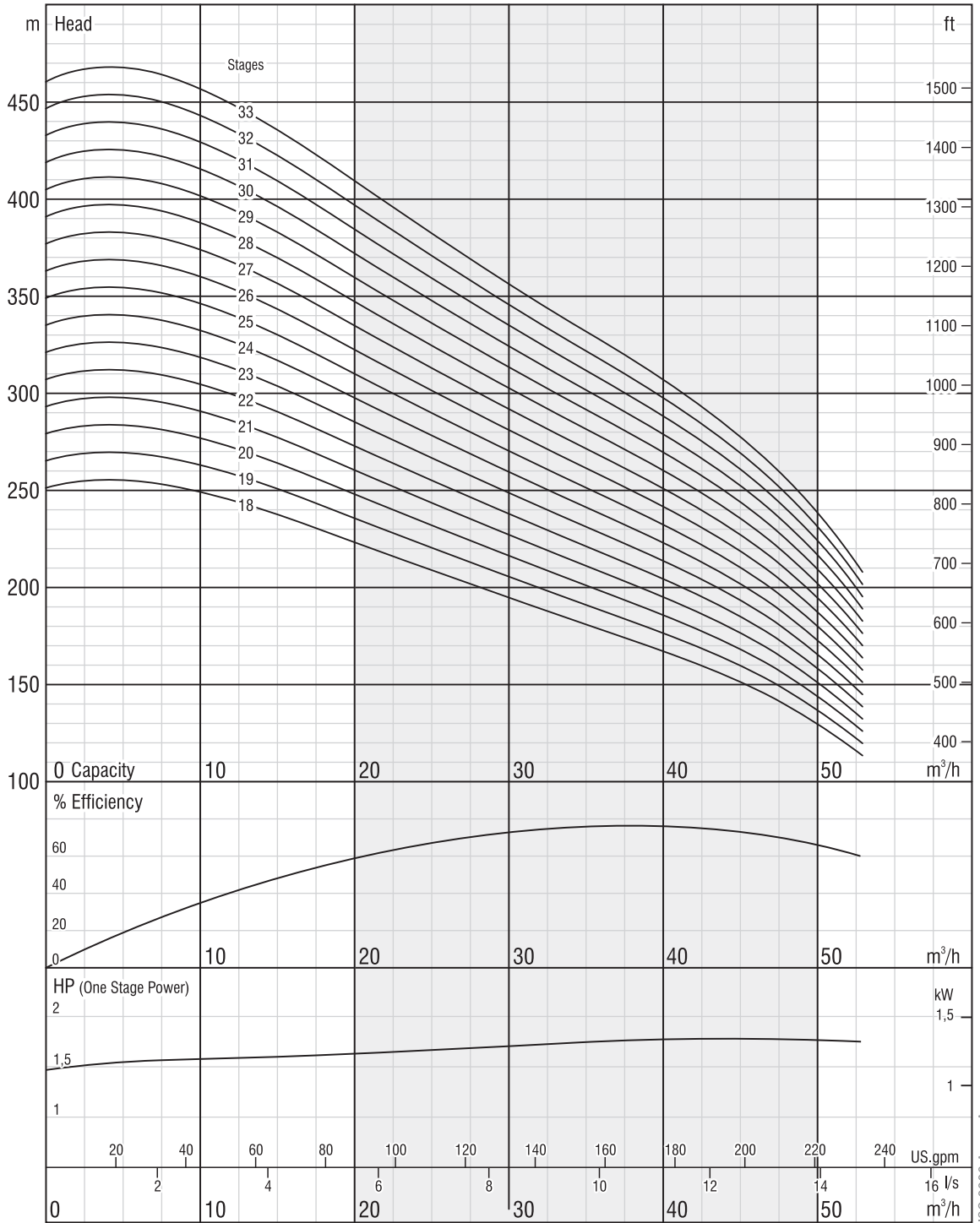
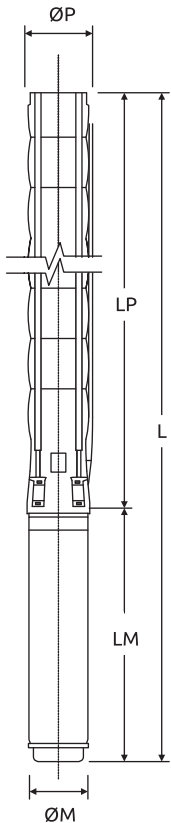
**Rotation:**  
CCW

**Revolution:**  
2900 rpm

**Outlet Diameter:**  
144 mm

**Outlet Connection Diameter:**  
4" (inside threaded)

**Shaft diameter:**  
22 mm



The hydraulic working characteristics have been taken with water at 15°C, at the atmospheric pressure of 1 bar and specific gravity is 1 gr/cm³  
Due to continuous improvement in design we reserve the right to amend specifications or data without prior notice.



**Performance Table**

Pump Type	Stages	Motor		Current (A)	m <sup>3</sup> /h l/s	0	21,6	28,8	36	43,2	46,8	50,4	58	
		kW	HP			0	6	8	10	12	13	14	16,1	
FX6-45/01	1	2,2	3	5.3	Head (m)	15	12	11	9	8	7	7	5	
FX6-45/02	2	3	4	7.2		29	25	22	19	17	16	14	14	11
FX6-45/03	3	5,5	7,5	12.6/13.3		45	39	35	32	28	26	24	24	20
FX6-45/04	4	7,5	10	17/17.2		60	52	47	42	38	35	32	32	26
FX6-45/05	5	7,5	10	17/17.2		74	65	59	53	47	44	41	41	33
FX6-45/06	6	9,3	12,5	20.8		89	78	71	64	56	53	49	49	39
FX6-45/07	7	11	15	23.7		104	91	83	74	66	61	57	57	46
FX6-45/08	8	13	17,5	28.7		119	104	95	85	75	70	65	65	52
FX6-45/09	9	15	20	33.1		134	117	106	95	85	79	73	73	59
FX6-45/10	10	18,5	25	41.8		149	130	118	106	94	88	81	81	65
FX6-45/11	11	18,5	25	41.8		164	144	130	117	103	96	89	89	72
FX6-45/12	12	22	30	48.5/46.3		179	157	142	127	113	105	97	97	78
FX6-45/13	13	22	30	48.5/46.3		193	170	154	138	122	114	106	106	85
FX6-45/14	14	22	30	48.5/46.3		208	183	166	148	131	123	114	114	91
FX6-45/15	15	26,5	35	56.4/55.1		223	196	177	159	141	132	122	122	98
FX6-45/16	16	26,5	35	56.4/55.1		238	209	189	170	150	140	130	130	104
FX6-45/17	17	30	40	64.6/62.4/61.7		253	222	201	180	160	149	138	138	111
FX6-45/18	18	30	40	64.6/62.4/61.7		268	235	213	191	169	158	146	146	117
FX6-45/19	19	37	50	79.7/74.3/74.3		283	248	225	201	178	167	154	154	124

**Dimensions and Weights Table**

Pump Type	Stages	Motor		Dimensions (mm)					Weights (kg)		
		kW	HP	L	LM	LP	ΦM	ΦP	Motor	Pump	Total
FX6-45/01	1	2,2	3	853	471	382	95	144	13.9	7	20.9
FX6-45/02	2	3	4	1024	530	494	95	144	16.2	10	26.2
FX6-45/03	3	5,5	7,5	1261/1255	655/649	606	95/142	144	22.5/40	12	34.5/52
FX6-45/04	4	7,5	10	1513/1396	795/678	718	95/142	144	28.8/43.5	15	43.8/58.5
FX6-45/05	5	7,5	10	1625/1508	795/678	830	95/142	144	28.8/43.5	18	46.8/61.5
FX6-45/06	6	9,3	12,5	1700	758	942	142	144	50	20	70
FX6-45/07	7	11	15	1854	800	1054	142	144	55	23	78
FX6-45/08	8	13	17,5	2017	851	1166	142	144	60	26	86
FX6-45/09	9	15	20	2189	911	1278	142	144	65	28	93
FX6-45/10	10	18,5	25	2363	973	1390	142	144	72	31	103
FX6-45/11	11	18,5	25	2475	973	1502	142	144	72	34	106
FX6-45/12	12	22	30	2620/2454	1006/840	1614	142/172	144	76/81	36	112/117
FX6-45/13	13	22	30	2732/2566	1006/840	1726	142/172	144	76/81	39	115/120
FX6-45/14	14	22	30	2844/2678	1006/840	1838	142/172	144	76/81	42	118/123
FX6-45/15	15	26,5	35	3056/2840	1106/890	1950	142/172	144	87/86	44	131/130
FX6-45/16	16	26,5	35	3168/2952	1106/890	2062	142/172	144	87/86	47	134/133
FX6-45/17	17	30	40	3391/3114/3170	1217/940/996	2174	142/172/192	144	98/91/120	49	147/140/169
FX6-45/18	18	30	40	3503/3226/3282	1217/940/996	2286	142/172/192	144	98/91/120	52	150/143/172
FX6-45/19	19	37	50	3645/3378/3454	1247/980/1056	2398	142/172/192	144	103/103/129	55	158/158/184



**Performance Curves**

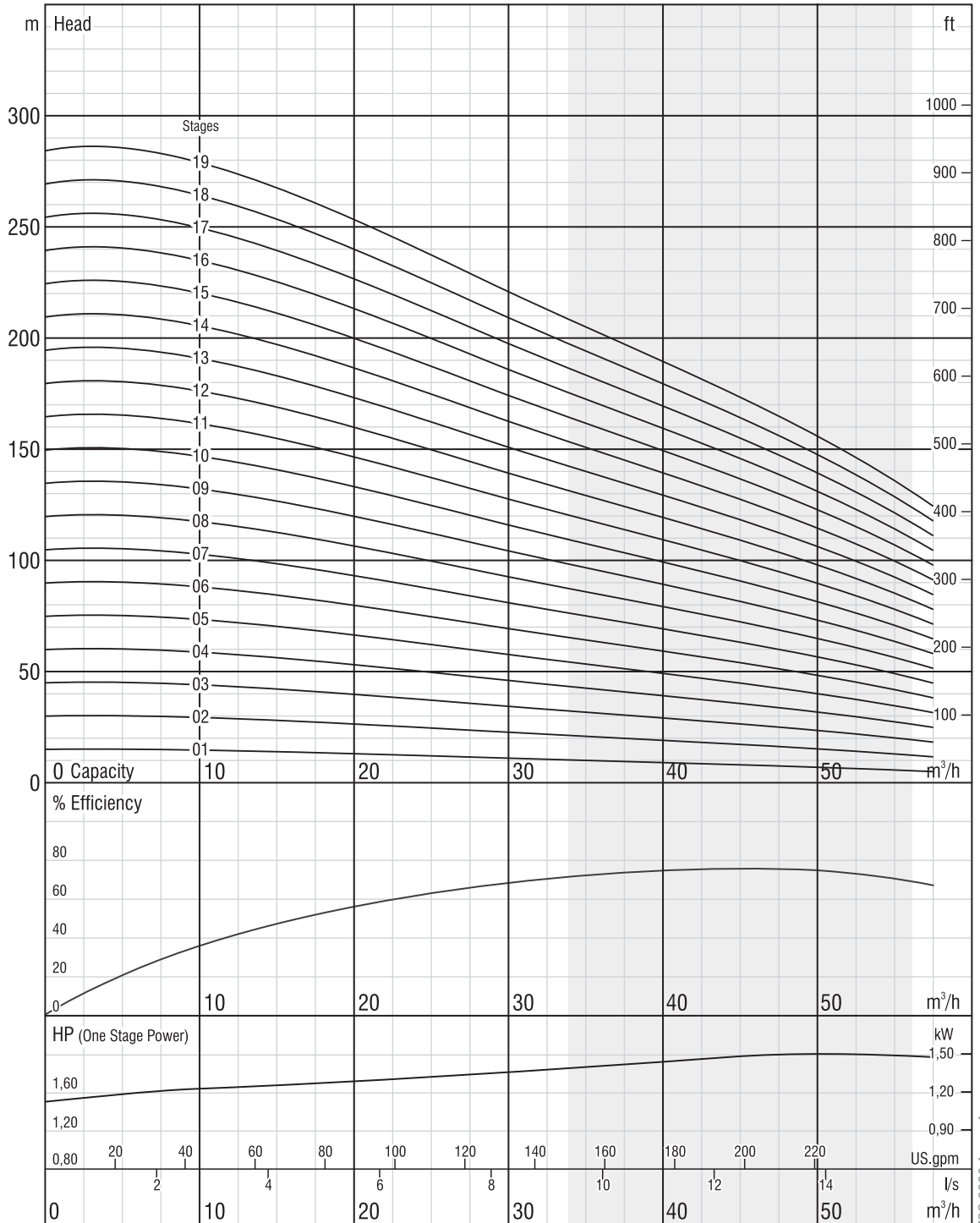
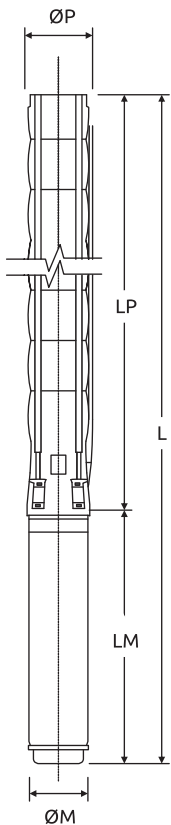
**Rotation:**  
CCW

**Revolution:**  
2900 rpm

**Outlet Diameter:**  
144 mm

**Outlet Connection Diameter:**  
4" (inside threaded)

**Shaft diameter:**  
22 mm



The hydraulic working characteristics have been taken with water at 15°C, at the atmospheric pressure of 1 bar and specific gravity is 1 gr/cm³  
Due to continuous improvement in design we reserve the right to amend specifications or data without prior notice.

ISO 9906 Annex A



**Performance Table**

Pump Type	Stages	Motor		Current (A)	m <sup>3</sup> /h l/s	0	21,6	28,8	36	43,2	46,8	50,4	58
		kW	HP			0	6	8	10	12	13	14	16,1
FX6-45/20	20	37	50	79.7/74.3/74.3	Head (m)	298	261	237	212	188	175	162	130
FX6-45/21	21	37	50	79.7/74.3/74.3		313	274	248	223	197	184	171	137
FX6-45/22	22	37	50	79.7/74.3/74.3		327	287	260	233	207	193	179	144
FX6-45/23	23	37	50	79.7/74.3/74.3		342	300	272	244	216	202	187	150
FX6-45/24	24	45	60	0/90.3/90.4		357	313	284	254	225	211	195	157
FX6-45/25	25	45	60	0/90.3/90.4		372	326	296	265	235	219	203	163
FX6-45/26	26	45	60	0/90.3/90.4		387	339	307	276	244	228	211	170
FX6-45/27	27	45	60	0/90.3/90.4		402	352	319	286	254	237	219	176
FX6-45/28	28	45	60	0/90.3/90.4		417	365	331	297	263	246	227	183
FX6-45/29	29	45	60	0/90.3/90.4		432	378	343	307	272	254	236	189
FX6-45/30	30	45	60	0/90.3/90.4		447	391	355	318	282	263	244	196
FX6-45/31	31	55	75	112.9/110.5		461	404	367	329	291	272	252	202
FX6-45/32	32	55	75	112.9/110.5		476	417	378	339	300	281	260	209
FX6-45/33	33	55	75	112.9/110.5		491	431	390	350	310	289	268	215

**Dimensions and Weights Table**

Pump Type	Stages	Motor		Dimensions (mm)					Weights (kg)		
		kW	HP	L	LM	LP	ΦM	ΦP	Motor	Pump	Total
FX6-45/20	20	37	50	3757/3490/3566	1247/980/1056	2510	142/172/192	144	103/103/129	57	160/160/186
FX6-45/21	21	37	50	3869/3602/3678	1247/980/1056	2622	142/172/192	144	103/103/129	60	163/163/189
FX6-45/22	22	37	50	3981/3714/3790	1247/980/1056	2734	142/172/192	144	103/103/129	63	166/166/192
FX6-45/23	23	37	50	4093/3826/3902	1247/980/1056	2846	142/172/192	144	103/103/129	65	168/168/194
FX6-45/24	24	45	60	4305/4018/4074	1347/1060/1116	2958	142/172/192	144	110/113/138	68	178/181/206
FX6-45/25	25	45	60	4417/4130/4186	1347/1060/1116	3070	142/172/192	144	110/113/138	71	181/184/209
FX6-45/26	26	45	60	4529/4242/4298	1347/1060/1116	3182	142/172/192	144	110/113/138	73	183/186/211
FX6-45/27	27	45	60	4641/4354/4410	1347/1060/1116	3294	142/172/192	144	110/113/138	76	186/189/214
FX6-45/28	28	45	60	4753/4466/4522	1347/1060/1116	3406	142/172/192	144	110/113/138	79	189/192/217
FX6-45/29	29	45	60	4865/4578/4634	1347/1060/1116	3518	142/172/192	144	110/113/138	81	191/194/219
FX6-45/30	30	45	60	4977/4690/4746	1347/1060/1116	3630	142/172/192	144	110/113/138	84	194/197/222
FX6-45/31	31	55	75	4960/5028	1218/1286	3742	172/192	144	138/170	86	224/256
FX6-45/32	32	55	75	5072/5140	1218/1286	3854	172/192	144	138/170	89	227/259
FX6-45/33	33	55	75	5184/5252	1218/1286	3966	172/192	144	138/170	92	230/262





**Performance Curves**

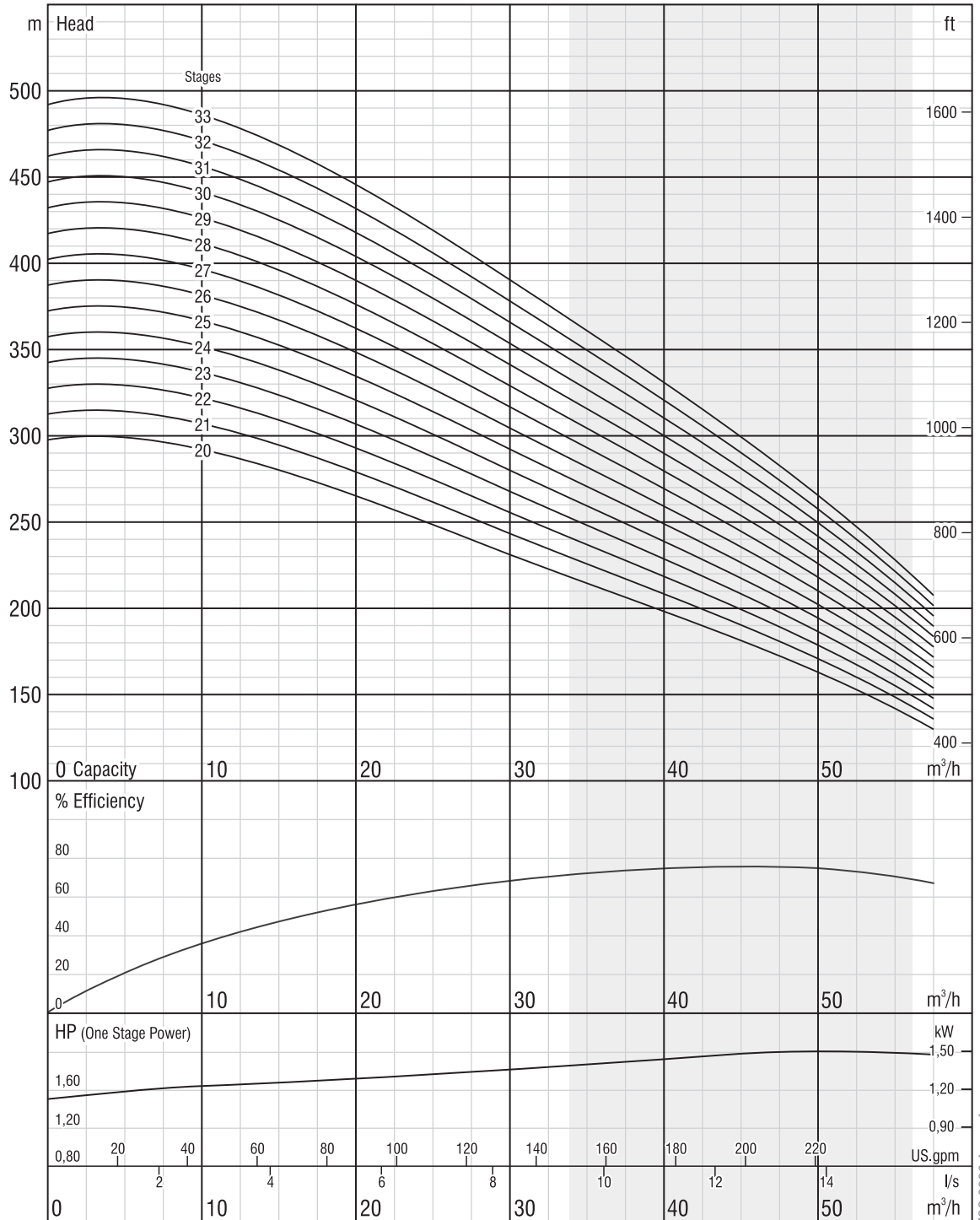
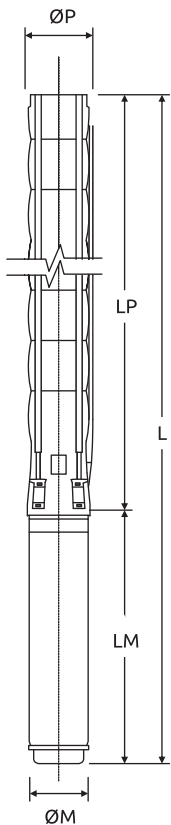
**Rotation:**  
CCW

**Revolution:**  
2900 rpm

**Outlet Diameter:**  
144 mm

**Outlet Connection Diameter:**  
4" (inside threaded)

**Shaft diameter:**  
22 mm



The hydraulic working characteristics have been taken with water at 15°C, at the atmospheric pressure of 1 bar and specific gravity is 1 gr/cm³  
Due to continuous improvement in design we reserve the right to amend specifications or data without prior notice.

ISO 9906 Annex A



**Performance Table**

Pump Type	Stages	Motor		Current (A)	m <sup>3</sup> /h l/s	0	30	36	43	51	58	65	72
		kW	HP			0	8,3	10	11,9	14,2	16,1	18,1	20
FX6-60/01	1	2,2	3	5.3	Head (m)	14	10	9	8	7	6	5	3
FX6-60/02	2	4	5,5	9.5/10.2		30	23	22	20	19	17	15	12
FX6-60/03	3	5,5	7,5	12.6/13.3		44	35	33	31	28	26	23	18
FX6-60/04	4	7,5	10	17/17.2		59	47	44	41	38	35	31	25
FX6-60/05	5	9,3	12,5	20.8		74	59	55	51	47	43	38	31
FX6-60/06	6	11	15	23.7		89	70	66	61	56	52	46	37
FX6-60/07	7	13	17,5	28.7		104	82	77	72	66	60	53	43
FX6-60/08	8	15	20	33.1		118	94	88	82	75	69	61	49
FX6-60/09	9	18,5	25	41.8		133	105	99	92	85	78	69	55
FX6-60/10	10	18,5	25	41.8		148	117	110	102	94	86	76	62
FX6-60/11	11	22	30	48.5/46.3		163	129	121	112	104	95	84	68
FX6-60/12	12	22	30	48.5/46.3		178	140	132	123	113	104	92	74
FX6-60/13	13	26,5	35	56.4/55.1		192	152	143	133	122	112	99	80
FX6-60/14	14	26,5	35	56.4/55.1		207	164	154	143	132	121	107	86
FX6-60/15	15	30	40	64.6/62.4/61.7		222	176	165	153	141	130	114	92
FX6-60/16	16	30	40	64.6/62.4/61.7		237	187	176	164	151	138	122	99
FX6-60/17	17	30	40	64.6/62.4/61.7		252	199	187	174	160	147	130	105

**Dimensions and Weights Table**

Pump Type	Stages	Motor		Dimensions (mm)					Weights (kg)		
		kW	HP	L	LM	LP	ΦM	ΦP	Motor	Pump	Total
FX6-60/01	1	2,2	3	853	471	382	95	144	13.9	7	20.9
FX6-60/02	2	4	5,5	1094/1143	600/649	494	95/142	144	19.8/40	10	29.8/50
FX6-60/03	3	5,5	7,5	1261/1255	655/649	606	95/142	144	22.5/40	12	34.5/52
FX6-60/04	4	7,5	10	1513/1396	795/678	718	95/142	144	28.8/43.5	15	43.8/58.5
FX6-60/05	5	9,3	12,5	1588	758	830	142	144	50	18	68
FX6-60/06	6	11	15	1742	800	942	142	144	55	20	75
FX6-60/07	7	13	17,5	1905	851	1054	142	144	60	23	83
FX6-60/08	8	15	20	2077	911	1166	142	144	65	26	91
FX6-60/09	9	18,5	25	2251	973	1278	142	144	72	28	100
FX6-60/10	10	18,5	25	2363	973	1390	142	144	72	31	103
FX6-60/11	11	22	30	2508/2342	1006/840	1502	142/172	144	76/81	34	110/115
FX6-60/12	12	22	30	2620/2454	1006/840	1614	142/172	144	76/81	36	112/117
FX6-60/13	13	26,5	35	2832/2616	1106/890	1726	142/172	144	87/86	39	126/125
FX6-60/14	14	26,5	35	2944/2728	1106/890	1838	142/172	144	87/86	42	129/128
FX6-60/15	15	30	40	3167/2890/2946	1217/940/996	1950	142/172/192	144	98/91/120	44	142/135/164
FX6-60/16	16	30	40	3279/3002/3058	1217/940/996	2062	142/172/192	144	98/91/120	47	145/138/167
FX6-60/17	17	30	40	3391/3114/3170	1217/940/996	2174	142/172/192	144	98/91/120	50	148/141/170



**Performance Curves**

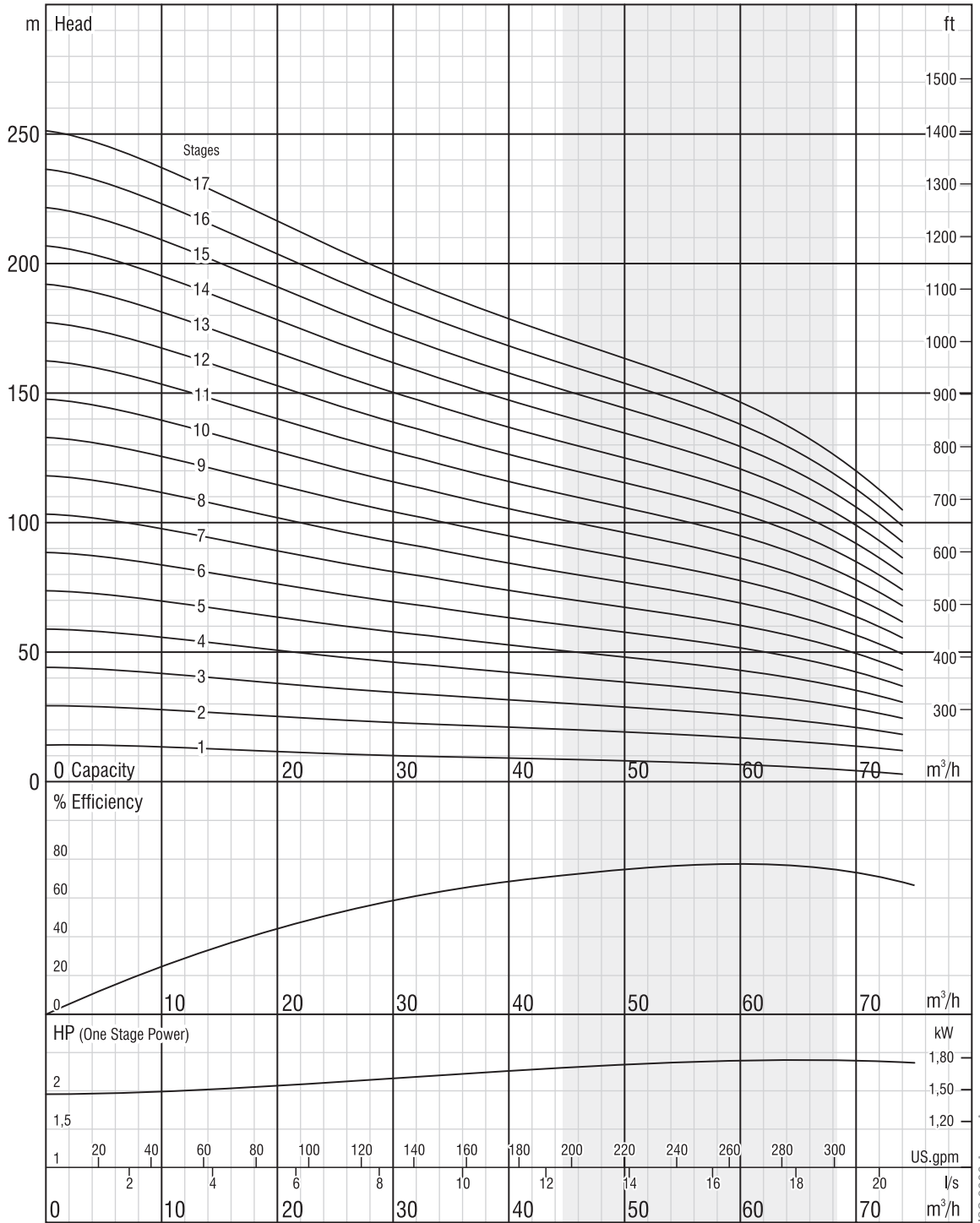
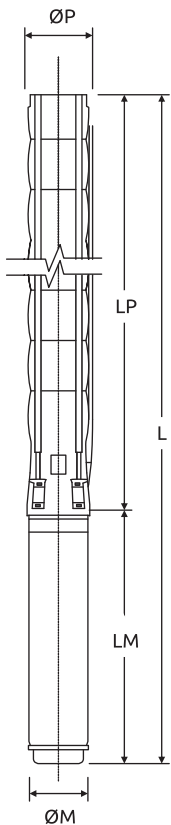
**Rotation:**  
CCW

**Revolution:**  
2900 rpm

**Outlet Diameter:**  
144 mm

**Outlet Connection Diameter:**  
4" (inside threaded)

**Shaft diameter:**  
22 mm



The hydraulic working characteristics have been taken with water at 15°C, at the atmospheric pressure of 1 bar and specific gravity is 1 gr/cm³. Due to continuous improvement in design we reserve the right to amend specifications or data without prior notice.

ISO 9906 Annex A



**Performance Table**

Pump Type	Stages	Motor		Current (A)	m <sup>3</sup> /h l/s	0	30	36	43	51	58	65	72
		kW	HP			0	8,3	10	11,9	14,2	16,1	18,1	20
FX6-60/18	18	37	50	79.7/74.3/74.3	Head (m)	266	211	198	184	169	155	137	111
FX6-60/19	19	37	50	79.7/74.3/74.3		281	222	209	194	179	164	145	117
FX6-60/20	20	37	50	79.7/74.3/74.3		296	234	220	204	188	173	153	123
FX6-60/21	21	37	50	79.7/74.3/74.3		311	246	231	215	198	181	160	129
FX6-60/22	22	45	60	0/90.3/90.4		326	257	242	225	207	190	168	136
FX6-60/23	23	45	60	0/90.3/90.4		340	269	253	235	216	199	176	142
FX6-60/24	24	45	60	0/90.3/90.4		355	281	264	245	226	207	183	148
FX6-60/25	25	52	70	105.6/103.3		370	293	275	256	235	216	191	154
FX6-60/26	26	52	70	105.6/103.3		385	304	285	266	245	225	198	160
FX6-60/27	27	52	70	105.6/103.3		400	316	296	276	254	233	206	166
FX6-60/28	28	52	70	105.6/103.3		414	328	307	286	264	242	214	173
FX6-60/29	29	55	75	112.9/110.5		429	339	318	296	273	250	221	179
FX6-60/30	30	55	75	112.9/110.5		444	351	329	307	282	259	229	185

**Dimensions and Weights Table**

Pump Type	Stages	Motor		Dimensions (mm)					Weights (kg)		
		kW	HP	L	LM	LP	ΦM	ΦP	Motor	Pump	Total
FX6-60/18	18	37	50	3533/3266/3342	1247/980/1056	2286	142/172/192	144	103/103/129	52	155/155/181
FX6-60/19	19	37	50	3645/3378/3454	1247/980/1056	2398	142/172/192	144	103/103/129	55	158/158/184
FX6-60/20	20	37	50	3757/3490/3566	1247/980/1056	2510	142/172/192	144	103/103/129	58	161/161/187
FX6-60/21	21	37	50	3869/3602/3678	1247/980/1056	2622	142/172/192	144	103/103/129	60	163/163/189
FX6-60/22	22	45	60	4081/3794/3850	1347/1060/1116	2734	142/172/192	144	110/113/138	63	173/176/201
FX6-60/23	23	45	60	4193/3906/3962	1347/1060/1116	2846	142/172/192	144	110/113/138	65	175/178/203
FX6-60/24	24	45	60	4305/4018/4074	1347/1060/1116	2958	142/172/192	144	110/113/138	68	178/181/206
FX6-60/25	25	52	70	4209/4271	1139/1201	3070	172/192	144	127/152	71	198/223
FX6-60/26	26	52	70	4321/4383	1139/1201	3182	172/192	144	127/152	73	200/225
FX6-60/27	27	52	70	4433/4495	1139/1201	3294	172/192	144	127/152	76	203/228
FX6-60/28	28	52	70	4545/4607	1139/1201	3406	172/192	144	127/152	79	206/231
FX6-60/29	29	55	75	4736/4804	1218/1286	3518	172/192	144	138/170	81	219/251
FX6-60/30	30	55	75	4848/4916	1218/1286	3630	172/192	144	138/170	84	222/254



**Performance Curves**

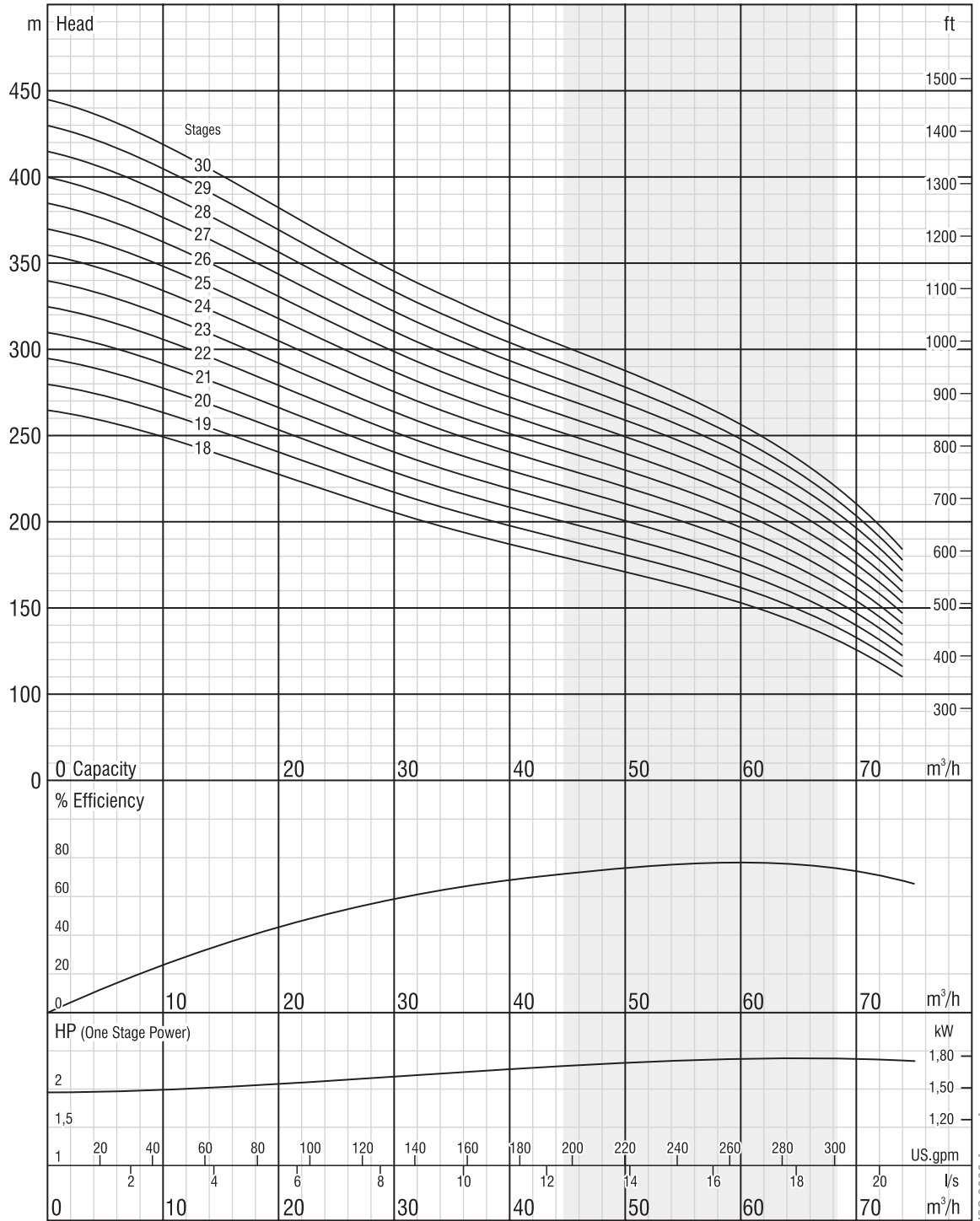
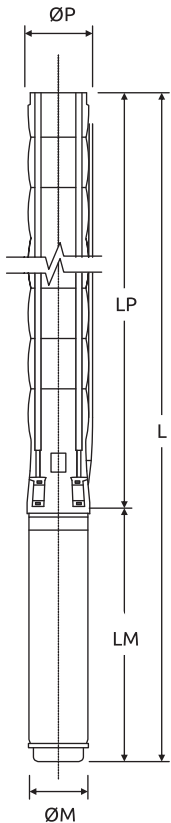
**Rotation:**  
CCW

**Revolution:**  
2900 rpm

**Outlet Diameter:**  
144 mm

**Outlet Connection Diameter:**  
4" (inside threaded)

**Shaft diameter:**  
22 mm



The hydraulic working characteristics have been taken with water at 15°C, at the atmospheric pressure of 1 bar and specific gravity is 1 gr/cm³  
Due to continuous improvement in design we reserve the right to amend specifications or data without prior notice.

ISO 9906 Annex A



**Performance Table**

Pump Type	Stages	Motor		Current (A)	m <sup>3</sup> /h l/s	0	25	70	80	90	100	110	120	130
		kW	HP			0	6,9	19,4	22,2	25,0	27,8	30,6	33,3	36,1
FX8-110/01	1	7,5	10	17/17.2	Head (m)	27	27	22	22	21	20	18	16	14
FX8-110/02	2	15	20	33.1		55	53	45	43	42	39	36	33	28
FX8-110/03	3	22	30	48.5/46.3		82	80	67	65	63	59	55	49	43
FX8-110/04	4	30	40	64.6/62.4/61.7		110	107	90	87	83	79	73	66	57
FX8-110/05	5	37	50	79.7/74.3/74.3		137	133	112	109	104	98	91	82	71
FX8-110/06	6	45	60	0/90.3/90.4		165	160	135	130	125	118	109	99	85
FX8-110/07	7	52	70	105.6/103.3		192	187	157	152	146	138	128	115	99
FX8-110/08	8	60	80	0/119.1		220	213	180	174	167	158	146	131	114
FX8-110/09	9	67	90	0/134.6		247	240	202	196	188	177	164	148	128
FX8-110/10	10	75	100	150.7/0		274	267	225	217	208	197	182	164	142
FX8-110/11	11	81	110	162.7/159		302	293	247	239	229	217	200	181	156
FX8-110/12	12	92	125	184.8/179		329	320	270	261	250	236	219	197	170
FX8-110/13	13	92	125	184.8/179		357	347	292	283	271	256	237	214	185
FX8-110/14	14	110	150	218.5/216		384	373	315	304	292	276	255	230	199
FX8-110/15	15	110	150	218.5/216		412	400	337	326	313	295	273	246	213
FX8-110/16	16	129	175	248		439	427	360	348	333	315	292	263	227
FX8-110/17	17	129	175	248		467	453	382	370	354	335	310	279	241
FX8-110/18	18	129	175	248		494	480	405	391	375	355	328	296	256
FX8-110/19	19	147	200	282		521	507	427	413	396	374	346	312	270
FX8-110/20	20	147	200	282		549	533	450	435	417	394	364	329	284

**Dimensions and Weights Table**

Pump Type	Stages	Motor		Dimensions (mm)					Weights (kg)		
		kW	HP	L	LM	LP	ΦM	ΦP	Motor	Pump	Total
FX8-110/01	1	7,5	10	1481/1364	795/678	686	95/142	213	28.8/43.5	32	60.8/75.5
FX8-110/02	2	15	20	1753	911	842	142	213	65	38	103
FX8-110/03	3	22	30	2003/1837	1006/840	997	142/172	213	76/81	45	121/126
FX8-110/04	4	30	40	2370/2093/2149	1217/940/996	1153	142/172/192	213	98/91/120	51	149/142/171
FX8-110/05	5	37	50	2556/2289/2365	1247/980/1056	1309	142/172/192	213	103/103/129	57	160/160/186
FX8-110/06	6	45	60	2812/2525/2581	1347/1060/1116	1465	142/172/192	213	110/113/138	64	174/177/202
FX8-110/07	7	52	70	2759/2821	1139/1201	1620	172/192	213	127/152	70	197/222
FX8-110/08	8	60	80	3026/3062	1250/1286	1776	172/192	213	149/170	76	225/246
FX8-110/09	9	67	90	3214/3273	1282/1341	1932	172/192	213	160/185	83	243/268
FX8-110/10	10	75	100	3453/3337	1366/1250	2087	192/231	213	186/200	89	275/289
FX8-110/11	11	81	110	3634/3553	1391/1310	2243	192/231	213	195/228	95	290/323
FX8-110/12	12	92	125	3870/3769	1471/1370	2399	192/231	213	210/256	101	311/357
FX8-110/13	13	92	125	4025/3924	1471/1370	2554	192/231	213	210/256	108	318/364
FX8-110/14	14	110	150	4311/4140	1601/1430	2710	192/231	213	235/284	114	349/398
FX8-110/15	15	110	150	4467/4296	1601/1430	2866	192/231	213	235/284	120	355/404
FX8-110/16	16	129	175	4532	1510	3022	231	213	311	127	438
FX8-110/17	17	129	175	4687	1510	3177	231	213	311	133	444
FX8-110/18	18	129	175	4843	1510	3333	231	213	311	139	450
FX8-110/19	19	147	200	5099	1610	3489	231	213	338	145	483
FX8-110/20	20	147	200	5254	1610	3644	231	213	338	152	490



**Performance Curves**

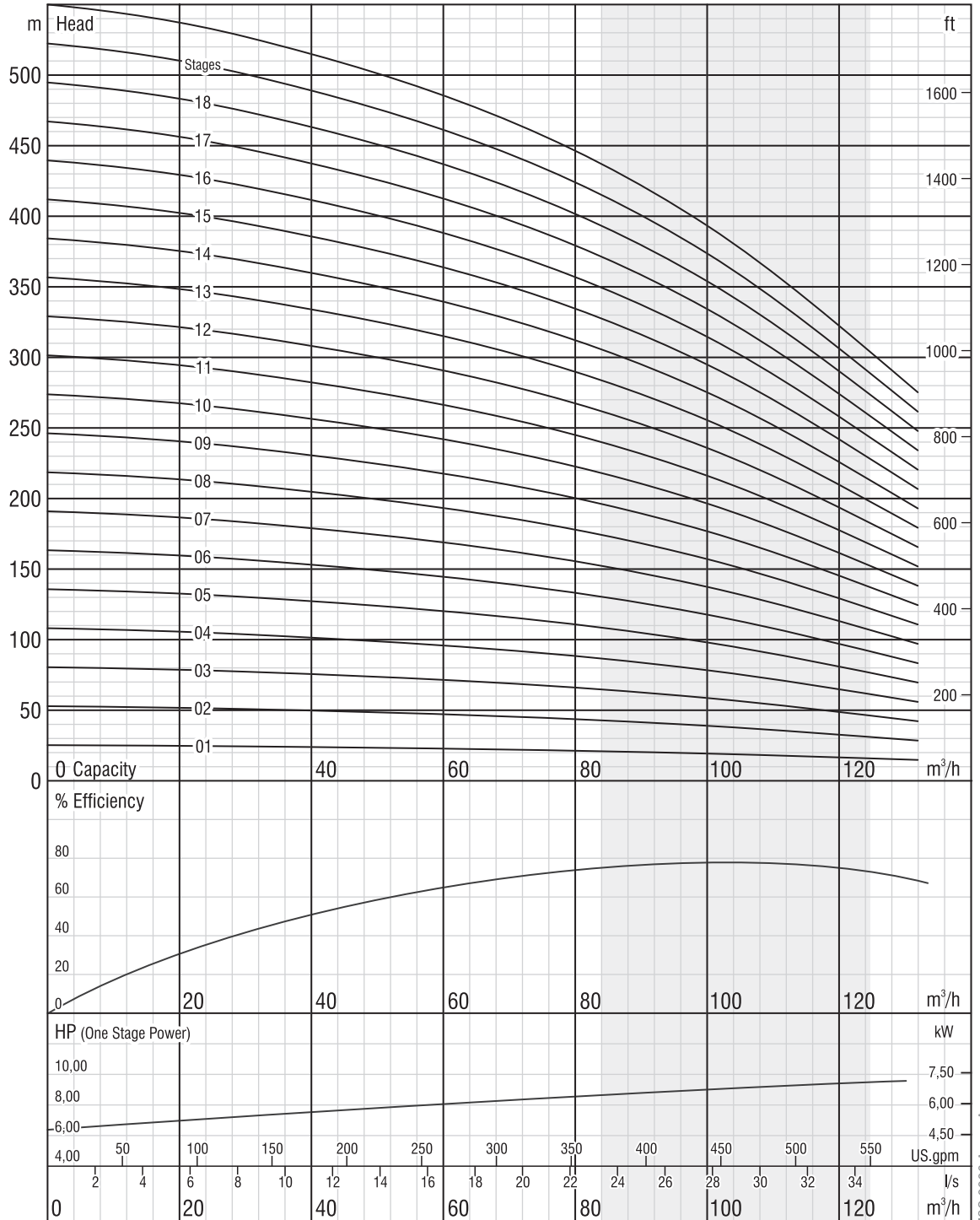
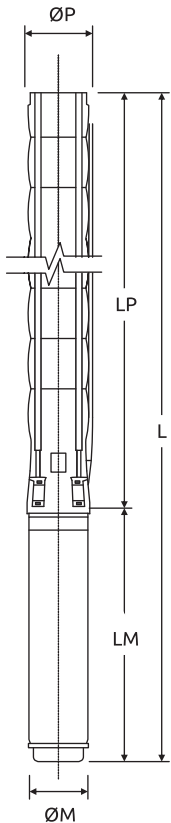
**Rotation:**  
CCW

**Revolution:**  
2900 rpm

**Outlet Diameter:**  
213 mm

**Outlet Connection Diameter:**  
5" (inside threaded)

**Shaft diameter:**  
30,16 mm



The hydraulic working characteristics have been taken with water at 15°C, at the atmospheric pressure of 1 bar and specific gravity is 1 gr/cm³  
Due to continuous improvement in design we reserve the right to amend specifications or data without prior notice.

ISO 9906 Annex A



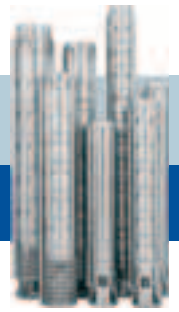
**Performance Table**

Pump Type	Stages	Motor		Current (A)	m <sup>3</sup> /h l/s	0	40	90	120	130	140	150	160	170
		kW	HP			0	11,1	25	33,3	36,1	38,9	41,7	44,4	47,2
FX8-125/01.B1	1	9,3	12,5	20.8	Head (m)	29	27	24	20	19	17	15	13	11
FX8-125/01	1	11	15	23.7		32	30	26	23	22	20	18	16	14
FX8-125/02.B2	2	18,5	25	41.8		59	55	47	41	38	35	31	27	21
FX8-125/02	2	22	30	48.5/46.3		64	60	52	46	43	40	37	33	28
FX8-125/03.B2.C1	3	26,5	35	56.4/55.1		84	79	67	57	53	48	42	36	28
FX8-125/03.B2	3	30	40	64.6/62.4/61.7		91	85	73	64	59	55	49	43	35
FX8-125/03	3	37	50	79.7/74.3/74.3		96	91	79	69	65	60	55	49	42
FX8-125/04.B4	4	37	50	79.7/74.3/74.3		117	110	94	81	76	69	62	53	43
FX8-125/04	4	45	60	0/90.3/90.4		128	121	105	92	86	80	73	65	56
FX8-125/05.B4.C1	5	45	60	0/90.3/90.4		143	134	114	98	91	83	73	62	49
FX8-125/05.B1	5	52	70	105.6/103.3		158	148	128	112	105	98	89	78	66
FX8-125/05	5	55	75	112.9/110.5		160	151	131	115	108	100	92	81	70
FX8-125/06.B3	6	60	80	0/119.1		184	173	149	130	122	112	101	89	74
FX8-125/06	6	67	90	0/134.6	192	181	157	138	130	120	110	98	83	
FX8-125/07	7	75	100	150.7/0	225	211	183	161	151	140	128	114	97	
FX8-125/08.B3	8	81	110	162.7/159	249	234	203	177	166	153	139	122	103	
FX8-125/08	8	92	125	184.8/179	257	241	210	184	173	161	146	130	111	
FX8-125/09.B3	9	92	125	184.8/179	281	264	229	200	187	173	157	139	117	
FX8-125/09	9	110	150	218.5/216	289	272	236	207	194	181	165	146	125	
FX8-125/10	10	110	150	218.5/216	321	302	262	230	216	201	183	163	139	
FX8-125/11.B4	11	110	150	218.5/216	343	322	279	243	228	211	191	168	142	
FX8-125/11	11	129	175	248	353	332	288	253	238	221	201	179	153	
FX8-125/12	12	129	175	248	385	362	315	275	259	241	220	195	167	
FX8-125/13	13	147	200	282	417	392	341	298	281	261	238	211	181	

**Dimensions and Weights Table**

Pump Type	Stages	Motor		Dimensions (mm)					Weights (kg)		
		kW	HP	L	LM	LP	ΦM	ΦP	Motor	Pump	Total
FX8-125/01.B1	1	9,3	12,5	1444	758	686	142	213	50	32	82
FX8-125/01	1	11	15	1486	800	686	142	213	55	32	87
FX8-125/02.B2	2	18,5	25	1815	973	842	142	213	72	39	111
FX8-125/02	2	22	30	1848/1682	1006/840	842	142/172	213	76/81	39	115/120
FX8-125/03.B2.C1	3	26,5	35	2103/1887	1106/890	997	142/172	213	87/86	45	132/131
FX8-125/03.B2	3	30	40	2214/1937/1993	1217/940/996	997	142/172/192	213	98/91/120	45	143/136/165
FX8-125/03	3	37	50	2244/1977/2053	1247/980/1056	997	142/172/192	213	103/103/129	45	148/148/174
FX8-125/04.B4	4	37	50	2400/2133/2209	1247/980/1056	1153	142/172/192	213	103/103/129	52	155/155/181
FX8-125/04	4	45	60	2500/2213/2269	1347/1060/1116	1153	142/172/192	213	110/113/138	52	162/165/190
FX8-125/05.B4.C1	5	45	60	2656/2369/2425	1347/1060/1116	1309	142/172/192	213	110/113/138	58	168/171/196
FX8-125/05.B1	5	52	70	2448/2510	1139/1201	1309	172/192	213	127/152	58	185/210
FX8-125/05	5	55	75	2527/2595	1218/1286	1309	172/192	213	138/170	58	196/228
FX8-125/06.B3	6	60	80	2715/2751	1250/1286	1465	172/192	213	149/170	65	214/235
FX8-125/06	6	67	90	2747/2806	1282/1341	1465	172/192	213	160/185	65	225/250
FX8-125/07	7	75	100	2986/2870	1366/1250	1620	192/231	213	186/200	71	257/271
FX8-125/08.B3	8	81	110	3167/3086	1391/1310	1776	192/231	213	195/228	78	273/306
FX8-125/08	8	92	125	3247/3146	1471/1370	1776	192/231	213	210/256	78	288/334
FX8-125/09.B3	9	92	125	3403/3302	1471/1370	1932	192/231	213	210/256	84	294/340
FX8-125/09	9	110	150	3533/3362	1601/1430	1932	192/231	213	235/284	84	319/368
FX8-125/10	10	110	150	3688/3517	1601/1430	2087	192/231	213	235/284	91	326/375
FX8-125/11.B4	11	110	150	3844/3673	1601/1430	2243	192/231	213	235/284	97	332/381
FX8-125/11	11	129	175	3753	1510	2243	231	213	311	97	408
FX8-125/12	12	129	175	3909	1510	2399	231	213	311	104	415
FX8-125/13	13	147	200	4164	1610	2554	231	213	338	110	448





**Performance Curves**

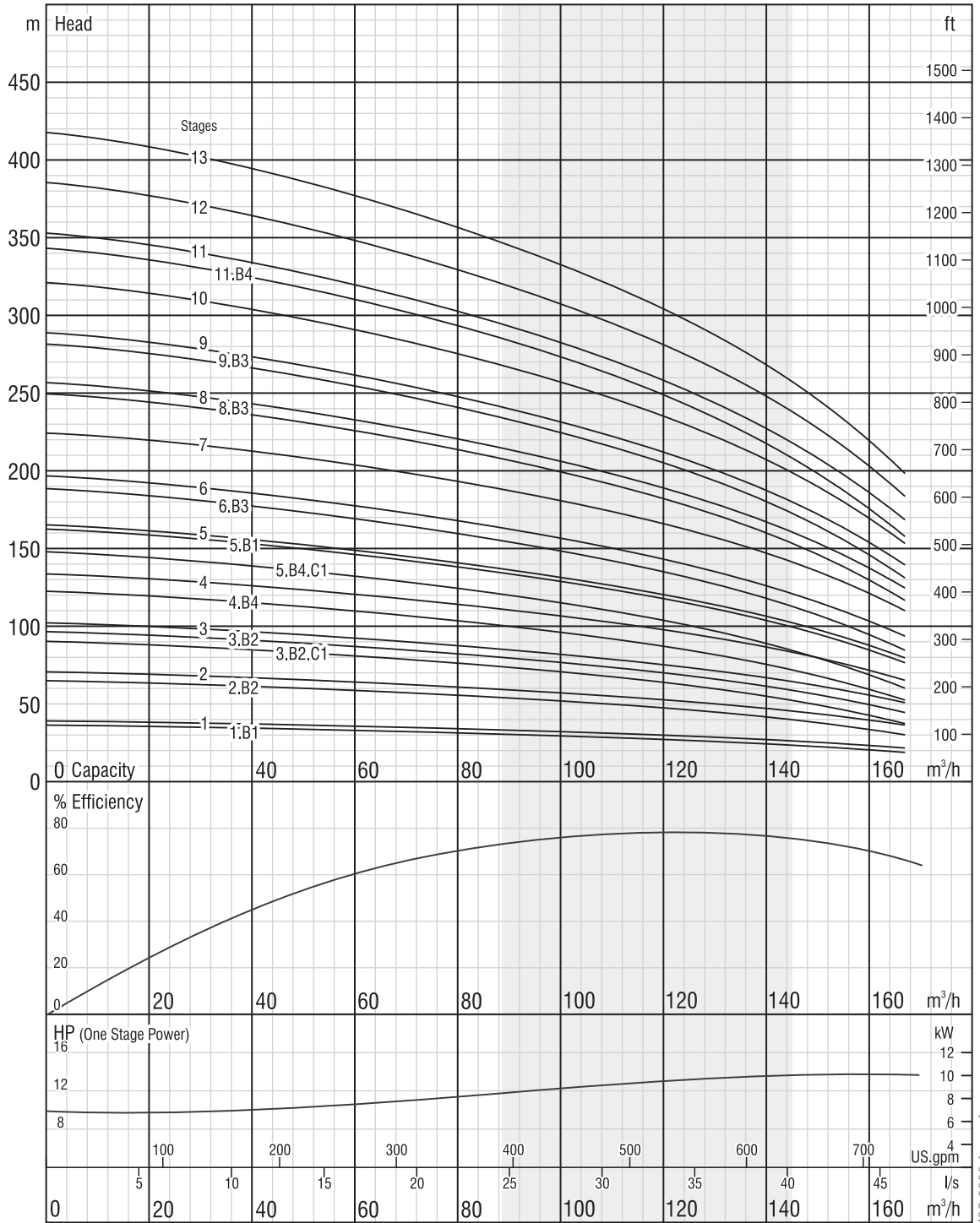
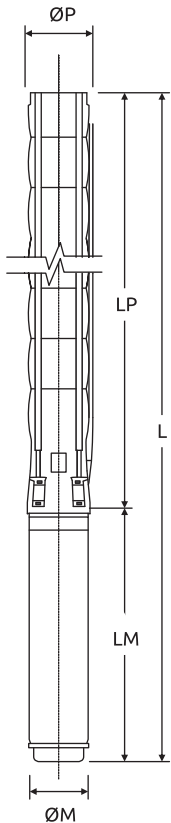
**Rotation:**  
CCW

**Revolution:**  
2900 rpm

**Outlet Diameter:**  
213 mm

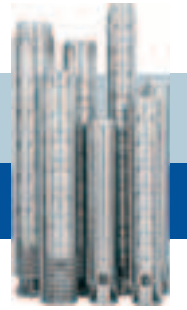
**Outlet Connection Diameter:**  
5" (inside threaded)

**Shaft diameter:**  
30,16 mm



The hydraulic working characteristics have been taken with water at 15°C, at the atmospheric pressure of 1 bar and specific gravity is 1 gr/cm³  
Due to continuous improvement in design we reserve the right to amend specifications or data without prior notice.

ISO 9906 Annex A



**Performance Table**

Pump Type	Stages	Motor		Current (A)	m <sup>3</sup> /h l/s	0	80	100	120	140	160	180	200
		kW	HP			0	22,2	27,8	33,3	38,9	44,4	50	55,6
FX8-160/01.C1	1	9,3	12,5	20.8	Head (m)	25	21	19	18	16	14	11	7
FX8-160/01	1	11	15	23.7		30	25	24	22	21	19	16	13
FX8-160/02.B1.C1	2	18,5	25	41.8		53	44	41	39	35	31	25	17
FX8-160/02	2	22	30	48.5/46.3		60	50	47	45	41	38	33	26
FX8-160/03.B3	3	30	40	64.6/62.4/61.7		84	70	66	62	57	51	43	32
FX8-160/03	3	37	50	79.7/74.3/74.3		90	76	71	67	62	57	49	39
FX8-160/04.B3.C1	4	37	50	79.7/74.3/74.3		110	91	85	80	74	65	54	39
FX8-160/04	4	45	60	0/90.3/90.4		119	101	95	89	83	75	65	52
FX8-160/05.B3.C2	5	45	60	0/90.3/90.4		135	112	105	98	90	80	65	46
FX8-160/05	5	55	75	112.9/110.5		149	126	119	111	104	94	81	65
FX8-160/06.B5	6	60	80	0/119.1		172	142	134	125	116	104	87	66
FX8-160/06	6	67	90	0/134.6		179	151	142	134	124	113	98	78
FX8-160/07.B6	7	67	90	0/134.6		199	166	155	146	135	121	102	77
FX8-160/07.B3	7	75	100	150.7/0		204	171	161	151	140	126	108	84
FX8-160/07.B1	7	75	100	150.7/0	208	175	164	154	143	130	112	89	

**Dimensions and Weights Table**

Pump Type	Stages	Motor		Dimensions (mm)					Weights (kg)		
		kW	HP	L	LM	LP	ΦM	ΦP	Motor	Pump	Total
FX8-160/01.C1	1	9,3	12,5	1444	758	686	142	226	50	34	84
FX8-160/01	1	11	15	1486	800	686	142	226	55	34	89
FX8-160/02.B1.C1	2	18,5	25	1815	973	842	142	226	72	40	112
FX8-160/02	2	22	30	1848/1682	1006/840	842	142/172	226	76/81	40	116/121
FX8-160/03.B3	3	30	40	2214/1937/1993	1217/940/996	997	142/172/192	226	98/91/120	47	145/138/167
FX8-160/03	3	37	50	2244/1977/2053	1247/980/1056	997	142/172/192	226	103/103/129	47	150/150/176
FX8-160/04.B3.C1	4	37	50	2400/2133/2209	1247/980/1056	1153	142/172/192	226	103/103/129	53	156/156/182
FX8-160/04	4	45	60	2500/2213/2269	1347/1060/1116	1153	142/172/192	226	110/113/138	53	163/166/191
FX8-160/05.B3.C2	5	45	60	2656/2369/2425	1347/1060/1116	1309	142/172/192	226	110/113/138	60	170/173/198
FX8-160/05	5	55	75	2527/2595	1218/1286	1309	172/192	226	138/170	60	198/230
FX8-160/06.B5	6	60	80	2715/2751	1250/1286	1465	172/192	226	149/170	66	215/236
FX8-160/06	6	67	90	2747/2806	1282/1341	1465	172/192	226	160/185	66	226/251
FX8-160/07.B6	7	67	90	2902/2961	1282/1341	1620	172/192	226	160/185	73	233/258
FX8-160/07.B3	7	75	100	2986/2870	1366/1250	1620	192/231	226	186/200	73	259/273
FX8-160/07.B1	7	75	100	2986/2870	1366/1250	1620	192/231	226	186/200	73	259/273



**Performance Curves**

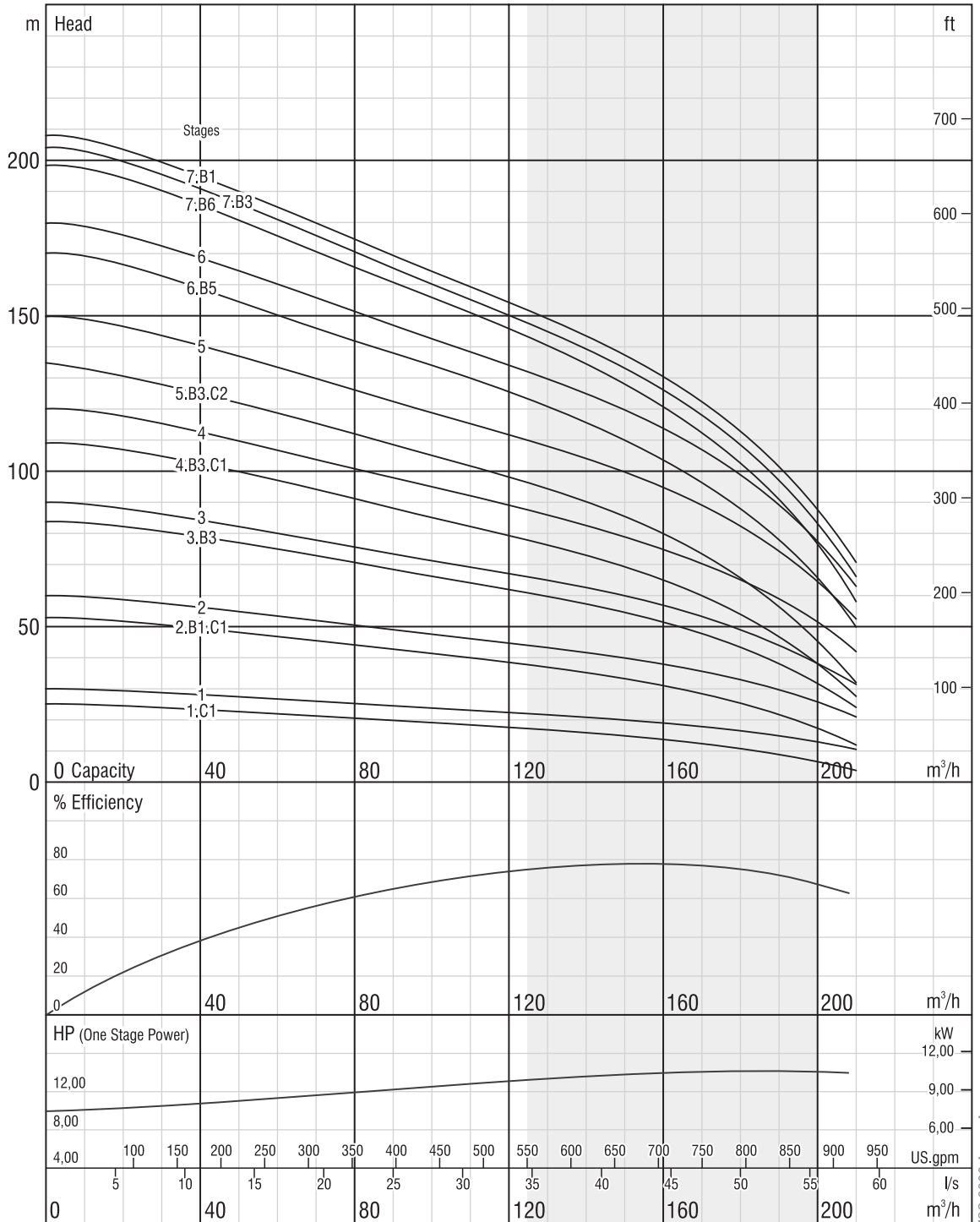
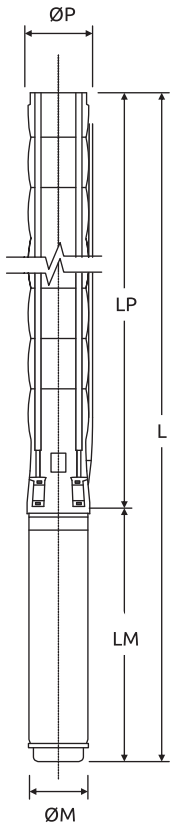
**Rotation:**  
CCW

**Revolution:**  
2900 rpm

**Outlet Diameter:**  
226 mm

**Outlet Connection Diameter:**  
5" (inside threaded)

**Shaft diameter:**  
30,16 mm



The hydraulic working characteristics have been taken with water at 15°C, at the atmospheric pressure of 1 bar and specific gravity is 1 gr/cm³  
Due to continuous improvement in design we reserve the right to amend specifications or data without prior notice.

ISO 9906 Annex A



**Performance Table**

Pump Type	Stages	Motor		Current (A)	m <sup>3</sup> /h l/s	0	80	100	120	140	160	180	200
		kW	HP			0	22,2	27,8	33,3	38,9	44,4	50	55,6
FX8-160/07	7	81	110	162.7/159	Head (m)	210	177	261	156	145	132	104	91
FX8-160/08.B8	8	81	110	162.7/159		225	187	284	165	152	136	100	93
FX8-160/08.B4	8	81	110	162.7/159		232	195	308	171	159	143	108	84
FX8-160/08	8	92	125	184.8/179		239	202	332	178	166	151	120	103
FX8-160/09.B4	9	92	125	184.8/179		262	220	356	194	180	162	140	107
FX8-160/09.B2	9	100	135	200.8		267	223	166	197	183	166	142	110
FX8-160/09	9	110	150	218.5/216		272	227	176	200	187	170	148	117
FX8-160/10	10	110	150	218.5/216		301	252	183	223	207	188	162	128
FX8-160/11	11	129	175	248		329	277	190	245	228	207	182	143
FX8-160/12	12	147	200	282		362	303	206	267	249	226	193	155
FX8-160/13	13	147	200	282		393	328	210	290	270	245	213	167
FX8-160/14	14	166	225	322		424	353	213	312	290	264	225	181
FX8-160/15	15	185	250	359		452	378	237	334	311	283	243	193
FX8-160/16	16	185	250	359		479	403	379	356	332	302	260	210

**Dimensions and Weights Table**

Pump Type	Stages	Motor		Dimensions (mm)					Weights (kg)		
		kW	HP	L	LM	LP	ΦM	ΦP	Motor	Pump	Total
FX8-160/07	7	81	110	3011/2930	1391/1310	1620	192/231	226	195/228	73	268/301
FX8-160/08.B8	8	81	110	3167/3086	1391/1310	1776	192/231	226	195/228	79	274/307
FX8-160/08.B4	8	81	110	3167/3086	1391/1310	1776	192/231	226	195/228	79	274/307
FX8-160/08	8	92	125	3247/3146	1471/1370	1776	192/231	226	210/256	79	289/335
FX8-160/09.B4	9	92	125	3403/3302	1471/1370	1932	192/231	226	210/256	86	296/342
FX8-160/09.B2	9	100	135	3468	1536	1932	192	226	225	86	311
FX8-160/09	9	110	150	3533/3362	1601/1430	1932	192/231	226	235/284	86	321/370
FX8-160/10	10	110	150	3688/3517	1601/1430	2087	192/231	226	235/284	92	327/376
FX8-160/11	11	129	175	3753	1510	2243	231	226	311	99	410
FX8-160/12	12	147	200	4009	1610	2399	231	226	338	105	443
FX8-160/13	13	147	200	4164	1610	2554	231	226	338	112	450
FX8-160/14	14	166	225	4450	1740	2710	231	226	370	118	488
FX8-160/15	15	185	250	4686	1820	2866	231	226	400	124	524
FX8-160/16	16	185	250	4842	1820	3022	231	226	400	131	531



**Performance Curves**

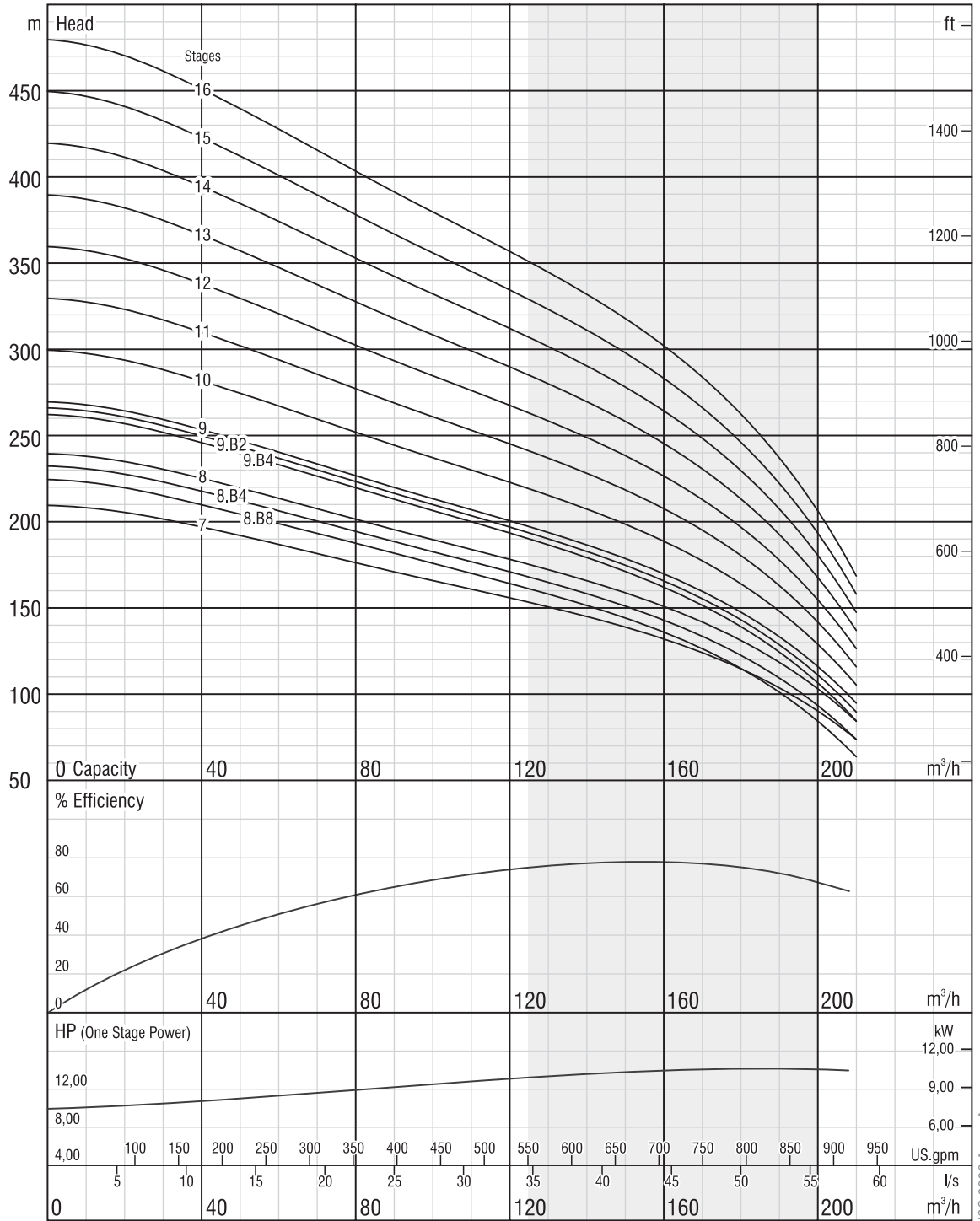
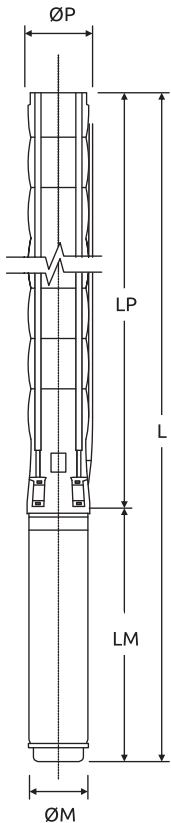
**Rotation:**  
CCW

**Revolution:**  
2900 rpm

**Outlet Diameter:**  
226 mm

**Outlet Connection Diameter:**  
5" (inside threaded)

**Shaft diameter:**  
30,16 mm



The hydraulic working characteristics have been taken with water at 15°C, at the atmospheric pressure of 1 bar and specific gravity is 1 gr/cm³. Due to continuous improvement in design we reserve the right to amend specifications or data without prior notice.

ISO 9906 Annex A

## Cable Size Table

HP	D.O.L. Cable Sizes										
	3x1,5	3x2,5	3x4	3x6	3x10	3x16	3x25	3x35	3x50	3x70	3x95
5,5	65	108	172	258	431	689	1.077	1.507	2.153	3.014	4.091
7,5	48	80	129	193	322	515	805	1.127	1.610	2.254	3.059
10	38	64	102	153	256	409	639	894	1.278	1.789	2.428
12,5		52	83	125	209	334	522	730	1.043	1.461	1.982
15		45	72	109	181	289	452	633	904	1.266	1.718
17,5			61	92	153	245	383	536	765	1.071	1.454
20			52	79	131	210	327	458	655	917	1.244
25					106	170	266	372	531	744	1.009
30					90	145	226	316	452	633	859
35					76	122	190	266	380	532	722
40					67	107	168	235	336	470	638
50						89	139	195	279	390	529
60							115	160	229	321	434
70								139	198	278	377
75								131	187	262	356
80								120	172	241	326
90									154	215	292
100									132	192	261
110									127	178	242
125										157	213
150											182
175											155
200											
210											
225											
250											

HP	Wye - Delta Cable Sizes										
	3x1,5	3x2,5	3x4	3x6	3x10	3x16	3x25	3x35	3x50	3x70	3x95
5,5	97	161	258	388	646	1.033	1.615	2.261	3.230	4.521	6.136
7,5	72	121	193	290	483	773	1.207	1.690	2.415	3.381	4.588
10	57	96	153	230	383	613	958	1.342	1.916	2.683	3.641
12,5	47	78	125	188	313	501	783	1.096	1.565	2.191	2.974
15	41	68	109	163	271	434	678	949	1.356	1.899	2.577
17,5	34	57	92	138	230	367	574	803	1.148	1.607	2.181
20	29	49	79	118	196	314	491	688	982	1.375	1.867
25		40	64	96	159	255	398	558	797	1.115	1.514
30			54	81	136	217	339	475	678	949	1.288
35			46	68	114	182	285	399	570	798	1.083
40				60	101	161	252	352	503	705	956
50					84	134	209	293	418	585	794
60					69	110	172	241	344	481	653
70					59	95	149	208	297	416	565
75						90	141	197	281	394	534
80						82	129	180	258	361	490
90						74	115	162	231	323	439
100							103	144	206	289	392
110							95	134	191	267	363
125								118	168	235	319
150								101	144	201	273
175									123	172	233
200										152	207
210										145	196
225											
250											



By **for**mula



## 6" / 8" SUBMERSIBLE MOTORS

High Performance with PE2+PA Winding Wire

**Cable Data**

Type	Connection Type			
	D.O.L.		Wye-Delta	
	mm <sup>2</sup>	n	mm <sup>2</sup>	n
F6-VS550	3x2,5	1	3x2,5	2
F6-VS750	3x2,5	1	3x2,5	2
F6-VS1000	3x2,5	1	3x2,5	2
F6-VS1250	3x2,5	1	3x2,5	2
F6-VS1500	3x4	1	3x4	2
F6-VS1750	3x4	1	3x4	2
F6-VS2000	3x4	1	3x4	2
F6-VS2500	3x6	1	3x4	2
F6-VS3000	3x6	1	3x4	2
F6-VS3500	3x10	1	3x6	2
F6-VS4000	3x16	1	3x6	2
F6-VS5000	3x16	1	3x6	2
F6-VS6000	3x16	1	3x6	2
F8-VS4000	3x16	1	3x10	2
F8-VS5000	3x16	1	3x10	2
F8-VS6000	3x16	1	3x10	2
F8-VS7000	3x16	1	3x10	2
F8-VS7500	3x16	1	3x10	2
F8-VS8000	3x16	1	3x10	2
F8-VS9000	3x16	1	3x10	2
F8-VS10000	3x25	1	3x16	2
F8-VS11000	3x25	1	3x16	2
F8-VS12500	3x25	1	3x16	2
F8-VS13500	3x25	1	3x16	2
F8-VS15000	3x25	1	3x16	2

Cable Type	Cable Dimensions		
	Thickness	Width	Diameter
	(t) mm	(w) mm	(d) mm
3x2,5	6,4	15	3,6
3x4	7,1	16,5	4,1
3x6	8	18,3	4,6
3x10	8,8	21,8	6
3x16	10,5	25,4	7
3x25	12	33	9
3x35	13,5	34,5	10,1
4x2,5	18	18	3,6
4x4	20,2	20,2	4,1
4x6	22,4	22,4	4,6
4x10	28	28	6
4x16	33,7	33,7	7
4x25	40,1	40,1	9

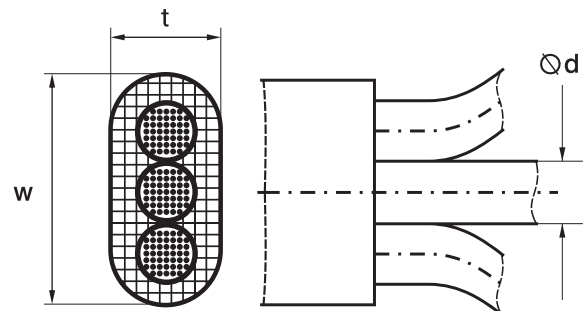
**PE2+PA Winding Wire**

- ✓ Excellent performance at high temperatures
- ✓ Longer life then other motors
- ✓ High resistance against voltage fluctuation
- ✓ Gives more safety factor then standard motor

Our submersible motors get their power from the PE2+PA winding wire used as standard. This wire, consisting of a single copper conductor, has a very high insulation resistance. PE2 (Polyethylene) provides electrical isolation, PA (Polyamide) provides mechanical protection. Increased heat resistance is achieved by cross-linking of polyethylene. In this way, Our submersible motors offers superior performance at high voltage and temperatures up to 70°C. At the same time it ensures trouble-free operation and a long service life of the motors for many years.

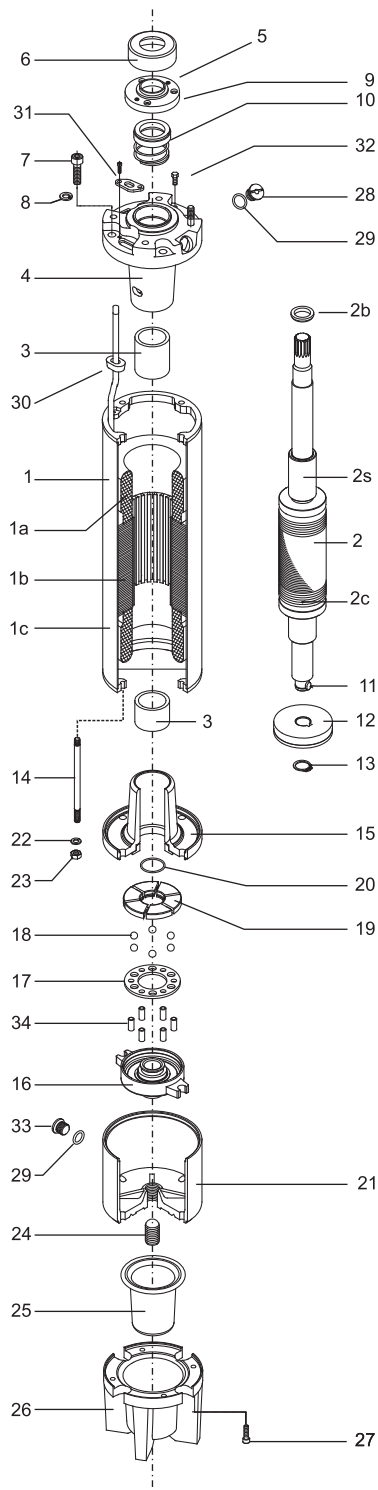
**GENERAL FEATURES**

- High quality PE2+PA winding wires
- High efficiency provides operation cost savings
- Water coolant system
- Flange with NEMA standards
- Maximum water temperature 70°C
- Standard voltage 380/460V - 50/60Hz (±%10.)
- Variable operation revolutions by frequency convertor
- Availability to be operated by Soft- Starter
- CW & CCW direction of rotation.
- Our motors can be operated horizontally in pools and wells which are not deep enough





PE2-PA Wired Submersible Motor Parts & Materials



No	Part Name	Material
1	Stator	-
1a	Winding Wire	PE2 / PA
1b	Stator Package	M350 / Magnetic Seal
1c	Stator Shell	AISI 304
2	Rotor	-
2a	Shaft Sleeve	St 37 (Coated CrNi)
2b	Balance Ring	St 37
2c	Copper Ring	Cu
3	Radial Bearing	Carbon
4	Upper Bearing Body	GG20-22
5	Bushing	Bronze
6	Slinger (Sand Guard)	NBR_EPDM
7	Hexagon Socket Cap Screws	Inox
8	Copper Ring	Cu
9	Cover Seal	AISI 420
10	Mechanical Seal	Ceramic Carbon
11	Axial Thrust Bearing Key	AISI 420
12	Axial Thrust Bearing	Carbon With Antimony
13	Retaining Ring	St 37
14	Tie Rod	Inox
15	Lower Bearing Body	GG20-22
16	Thrust Bearing Support	GG20-22
17	Ball Holder	St 37 (Coated Cr+3)
18	Thrust Bearing Ball	Inox
19	Tilting Pads	AISI 420
20	O-ring	NBR 70
21	Thrust Bearing Body	GG20
22	Copper Ring	Cu
23	Nut	Inox
24	Screw (Thrust Bearing Base)	Inox
25	Membrane	NBR-EPDM
26	Membrane Body	GG22
27	Hexagon Socket Cap Screws	Inox
28	Check-Valve	Bronze
29	O-ring	NBR 70
30	Cable Seal	NBR
31	Seal Cover	AISI 304
32	Nut	Inox
33	Plush (r 3/8")	Bronze
34	Ball Holder Pins	Inox

**6" Submersible Motors**

PE2-PA Wired / 142 mm Outside Diameter / 6" NEMA Flange Standard



Motor Type	P <sub>N</sub>		Axial Load	Voltage	n <sub>N</sub>	I <sub>N</sub>	I <sub>A</sub>	Efficiency (% load)			Cos φ (% load)			Length	Weight
	HP	kW						kN	V	rpm	A	A	50		
F6-VS550	5,5	4	20	380	2770	10,2	39,4	67	71	71	63	71	84	649	40
				400	2785	9,8	37,8	68	72	72	59	67	82		
				415	2795	9,5	36,9	68	72	72	57,5	66	81		
F6-VS750	7,5	5,5	20	380	2780	13,3	52,7	70	73	75	63	71	84	649	40
				400	2795	12,8	50,6	71	74	76	59	67	82		
				415	2805	12,3	48,7	72	75	77	57,5	66	81		
F6-VS1000	10	7,5	20	380	2790	17,2	66,4	77	79	79	63	71	84	678	43,5
				400	2805	16,5	63,8	79	80	80	59	67	82		
				415	2815	16,1	62,2	79	80	80	57,5	66	81		
F6-VS1250	12,5	9,3	20	380	2850	20,8	80,3	80	81	81	63	71	84	758	50
				400	2855	20,2	78,1	80	81	81	59	67	82		
				415	2865	19,5	75,3	81	82	82	57,5	66	81		
F6-VS1500	15	11	20	380	2810	23,7	91,6	81	82	82	67	75	86	800	55
				400	2825	22,8	88,0	82	83	83	63	71	84		
				415	2835	22,2	85,9	82	83	83	61	69	83		
F6-VS1750	17,5	13	20	380	2820	28,7	110,9	80	81	81	65	73	85	851	60
				400	2835	27,6	106,6	81	82	82	61	69	83		
				415	2845	26,6	102,7	82	83	83	59	67	82		
F6-VS2000	20	15	20	380	2850	33,1	127,9	80	81	81	65	73	85	911	65
				400	2855	32,2	124,5	80	81	81	61	69	83		
				415	2865	31,0	120,0	81	82	82	59	67	82		
F6-VS2500	25	18,5	20	380	2850	41,8	161,6	80	81	81	61	69	83	973	72
				400	2865	40,2	155,4	81	82	82	57,5	66	81		
				415	2875	38,8	149,8	82	83	83	56,5	65	80		
F6-VS3000	30	22	20	380	2860	48,5	187,6	81	82	82	63	71	84	1.006	76
				400	2875	46,7	180,3	82	83	83	59	67	82		
				415	2885	45,0	173,9	83	84	84	57,5	66	81		
F6-VS3500	35	26,5	26,5	380	2870	56,4	217,9	83	84	84	65	73	85	1.106	87
				400	2885	54,9	212,0	83	84	84	61	69	83		
				415	2895	52,9	204,4	84	85	85	59	67	82		
F6-VS4000	40	30	26,5	380	2880	64,6	249,7	82	83	83	65	73	85	1.217	98
				400	2895	62,1	240,0	83	84	84	61	69	83		
				415	2905	59,9	231,4	84	85	85	59	67	82		
F6-VS5000	50	37	26,5	380	2890	79,7	315,6	80	81	83	65	73	85	1.247	103
				400	2905	76,7	303,3	81	82	84	61	69	83		
				415	2915	74,7	288,8	83	84	84	59	67	82		
F6-VS6000	60	45	26,5	380	2890	96,9	374,7	82	81	83	65	73	85	1.347	110
				400	2905	93,2	360,2	81	82	84	61	69	83		
				415	2915	87,7	339,0	83	84	84	59	67	85		

Due to continuous improvement in design we reserve the right to amend specifications or data without prior notice.

## 8" Submersible Motors

PE2-PA Wired / 192 mm Outside Diameter / 8" NEMA Flange Standard



Motor Type	P <sub>N</sub>		Axial Load kN	Voltage V	n <sub>N</sub> rpm	I <sub>N</sub> A	I <sub>A</sub> A	Efficiency (% load)			Cos φ (% load)			Length mm	Weight kg
	HP	kW						50	75	100	50	75	100		
F8-VS4000	40	30	45	380	2850	61,7	239	82	83	83	75	80	89	996	120
				400	2865	59,3	229	83	84	84	69	76	87		
				415	2875	57,8	223	83	84	84	67	75	86		
F8-VS5000	50	37	45	380	2860	74,3	287	84	85	85	75	80	89	1.056	129
				400	2875	71,4	276	85	86	86	69	76	87		
				415	2885	69,6	269	85	86	86	67	75	86		
F8-VS6000	60	45	45	380	2860	90,4	349	84	85	85	75	80	89	1.116	138
				400	2875	86,8	336	85	86	86	69	76	87		
				415	2885	84,6	327	85	86	86	67	75	86		
F8-VS7000	70	52	45	380	2850	103,3	399	84	85	85	77	83	90	1.201	152
				400	2865	99,2	383	85	86	86	72	78	88		
				415	2875	96,7	374	85	86	86	69	76	87		
F8-VS7500	75	55	45	380	2850	110,5	427	83	84	84	77	83	90	1.286	170
				400	2865	107,4	415	83	84	84	72	78	88		
				415	2875	103,5	400	84	85	85	69	76	87		
F8-VS8000	80	60	45	380	2850	119,1	460	85	86	86	75	80	89	1.286	170
				400	2865	115,7	447	85	86	86	69	76	87		
				415	2875	112,9	436	85	86	86	67	75	86		
F8-VS9000	90	67	45	380	2850	134,6	520	84	85	85	75	80	89	1.341	185
				400	2865	129,3	499	85	86	86	69	76	87		
				415	2875	126,0	487	85	86	86	67	75	86		
F8-VS10000	100	75	45	380	2850	150,7	582	83	84	84	77	83	90	1.366	186
				400	2865	144,7	559	84	85	85	72	78	88		
				415	2875	141,1	545	84	85	85	69	76	87		
F8-VS11000	110	81	55	380	2855	162,7	629	84	85	85	75	80	89	1.391	195
				400	2860	156,3	604	85	86	86	69	76	87		
				415	2865	152,4	589	85	86	86	67	75	86		
F8-VS12500	125	92	55	380	2820	184,8	714	84	85	85	75	80	89	1.471	210
				400	2835	177,5	686	85	86	86	69	76	87		
				415	2850	173,1	669	85	86	86	67	75	86		
F8-VS13500	135	100	55	380	2920	200,8	776	84	85	85	75	80	89	1.536	225
				400	2925	192,9	746	85	86	86	69	76	87		
				415	2935	188,1	727	85	86	86	67	75	86		
F8-VS15000	150	110	55	380	2900	218,5	844	84	85	85	74	80	90	1.601	235
				400	2910	207,4	802	85	86	86	69	76	89		
				415	2915	199,9	773	85	86	86	67	75	89		

Due to continuous improvement in design we reserve the right to amend specifications or data without prior notice.





